



UNIDEN ProSERIES

USER'S GUIDE

This User's Guide applies to the following models:

PRO800N2-4K

PRO1600N2-4K

PRO3600N4-4K

PRO6400N0-4K

PRO12800N0-4K

PRO800N2-5MP

PRO1600N3-5MP

Uniden surveillance products are not manufactured and/or sold with the intent to be used for illegal purposes. Uniden expects consumer's use of these products to be in compliance with all local, state, and federal law. For further information on video surveillance and audio recording legal requirements, please consult your local, state and federal officials.

Uniden constantly works on improving our products. This includes updating our documentation with the latest firmware changes. Go to www.uniden.com to find the latest version of all documentation.

CONTENTS

INTRODUCTION	5
FIRMWARE AND DOCUMENTATION UPDATES	5
FEATURES	5
INCLUDED IN THE BOX	5
INSTALLING YOUR SYSTEM	6
PRO12800N0-4K	6
PRO6400N0-4K	6
PRO3600N4-4K	7
PRO1600N3-5MP	8
PRO800N2-5MP	8
PRO1600N2-4K/PRO800N2-4K	8
CONNECT TO POWER	9
INSTALL CAMERAS	9
Installation Tips	9
BASIC OPERATION	11
TAB OVERVIEW	11
INITIAL SETUP	12
OPERATION QUICK REFERENCE	13
SCREEN DESCRIPTIONS	14
PREVIEW SCREEN	14
PLAYBACK MAIN TAB	14
BACKUP MAIN TAB	15
CHANNEL SETTING MAIN TAB	16
Channel Connecting Side Tab	16
Channel Parameter Side Tab	16
Schedule Setting Side Tab	21
Manual Operation Side Tab	23
Channel Grouping Side Tab	24
Smart Side Tab	25
DISK MANAGER MAIN TAB	25

Storage Management Side Tab	25
Disk Grouping Side Tab	26
Disk Location Side Tab	26
SYSTEM SETTING MAIN TAB	27
Time Setting Side Tab	27
Channel Zone Setting Side Tab	28
Network Setting Side Tab.....	29
Alarm Management Side Tab.....	32
User Management Side Tab	34
PTZ Setting Side Tab	36
Device Setting Side Tab.....	37
MAINTENANCE MAIN TAB	37
System Information Side Tab	37
Log Information Side Tab	39
Config Management Side Tab.....	40
System Upgrade Side Tab	41
Auto Maintenance Side Tab	42
Network Monitoring Side Tab	42
FIRMWARE UPDATES.....	44
TROUBLESHOOTING	45
SPECIFICATIONS	47
FCC PART 15/IC COMPLIANCE.....	50
THREE-YEAR LIMITED WARRANTY	51

INTRODUCTION

This User's Guide provides basic instructions to install the NVR receiver and more detailed firmware operation information. A series of informational articles can also be found at support.uniden.com/Pro-series.

FIRMWARE AND DOCUMENTATION UPDATES

Because Uniden strives to provide the latest technology and quality in all of its products, firmware updates may be available with no prior notice. Check for updates at support.uniden.com/pro-support. Update the firmware manually either locally or remotely through a web browser.

FEATURES

The NVR provides a high-performance security network using a standard H.264 video compressed format. It can be used as a stand alone device or online as a part of a video surveillance network. With its professional network video surveillance software, it supports:

- Real-time recording up to 30 fps per channel.
- 24/7 surveillance-grade hard drive.
- Continuous, scheduled, and motion recording.
- H.264/H265 video compression.
- PTZ cameras supported, and can be remotely controlled through a mobile app.
- Accurate time stamps with NTP & daylight savings time.
- Digital zoom in live view and playback.
- HDMI video output with VGA on specific models.
- USB backup to connected USB devices and flash drives.
- Upgradeable firmware.
- Supports Internet Explorer, Safari, Chrome, and FireFox.
- Free Uniden ProSeries Mobile App (iOS and Android compatible) with live viewing, playback, video recording, and snapshot capability.
- Instant email alerts with attached snapshots.

INCLUDED IN THE BOX

Hardware included varies according to the specific model. Check the box itself for a hardware list.

If any items are missing or damaged, visit www.uniden.com for assistance.

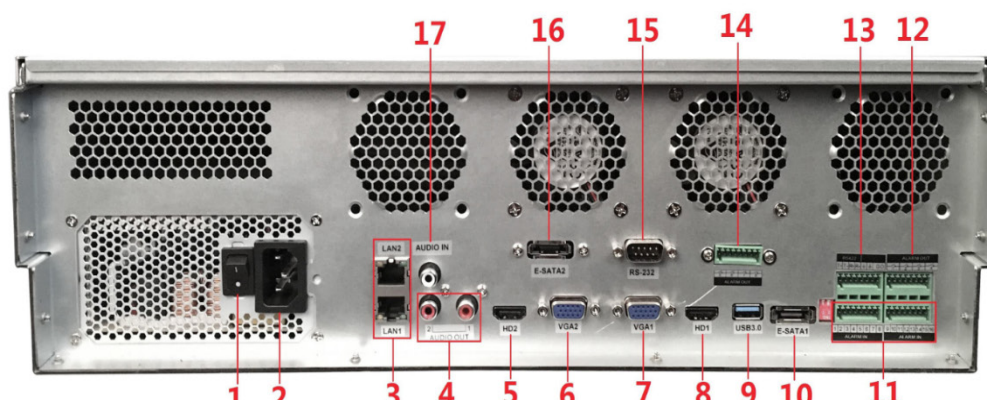
QUICK START GUIDE ATTRIBUTES

This Quick Start Guide may refer to specific screens in the procedures. The QSG follows these conventions:

- *Italic* text indicates a screen name, menu selection, etc. It is usually prefaced with "Select."
- **BOLD** text indicates an action, such as Save, Copy to, etc. It is usually prefaced with "Click."

INSTALLING YOUR SYSTEM

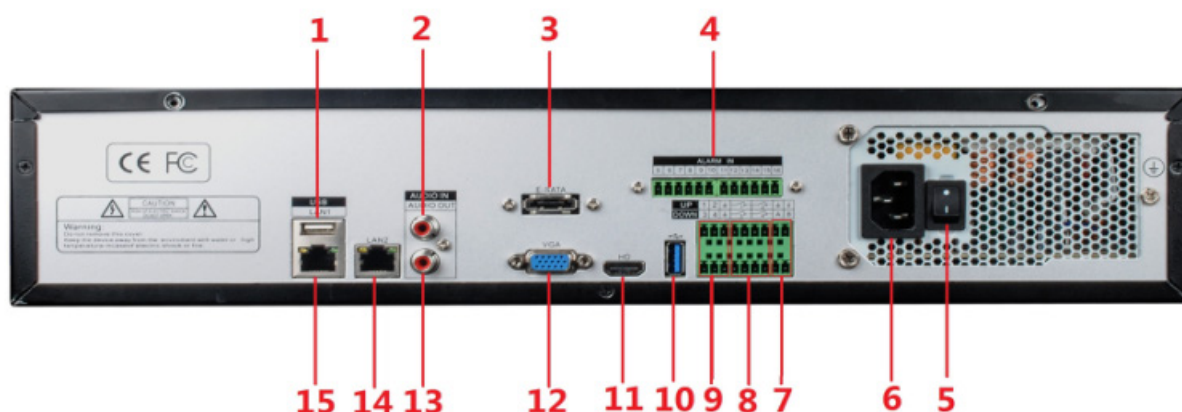
PRO12800N0-4K



- | | |
|---------------------------------|-------------------------------|
| 1. Power Switch | 10. E-Sata Interface 1 |
| 2. 110-220VAC Power Supply Plug | 11. Alarm Input |
| 3. LAN1/LAN2 Interface | 12. Alarm Output (1, 2, 3, 4) |
| 4. Audio Output | 13. RS422 Interface |
| 5. HDMI Video Output 2 | 14. Alarm Output (5, 6, 7, 8) |
| 6. VGA Video Output 2 | 15. RS232 |
| 7. VGA Video Output 1 | 16. E-Sata Interface 2 |
| 8. HDMI Video Output 1 | 17. Audio Input |
| 9. USB 3.0 | |

Cameras connect to LAN1 (PoE gigabit network switch)

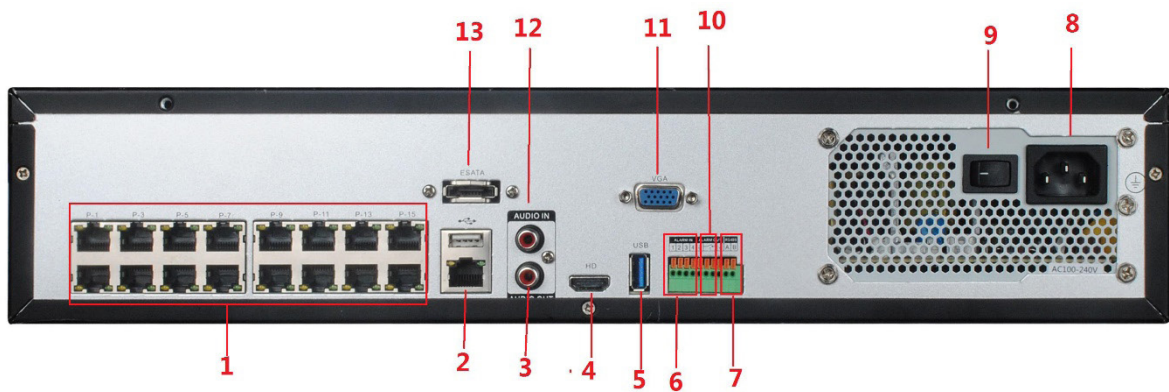
PRO6400N0-4K



- | | |
|---------------------------------|-------------------------|
| 1. USB 2.0 | 9. Alarm Input (1-4) |
| 2. Audio Input | 10.USB 3.0 Alarm Output |
| 3. E-SATA | 11.HDMI Video Output |
| 4. Alarm Input (5-16) | 12.VGA Video Output |
| 5. Power Switch | 13.Audio Output |
| 6. 110-220VAC Power Supply Plug | 14.LAN 1 |
| 7. RS485 | 15.LAN 2 |
| 8. Alarm Output | |

Cameras connect to LAN1 (PoE gigabit network switch)

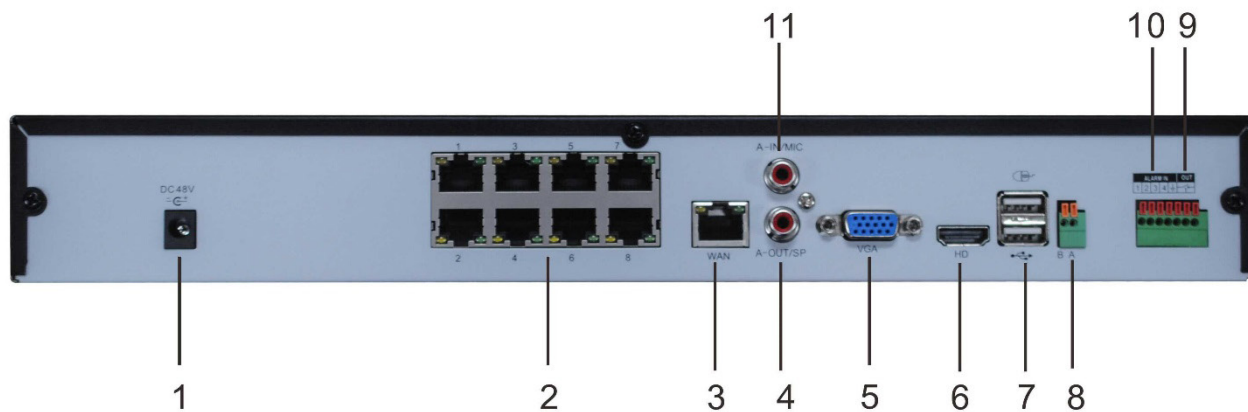
PRO3600N4-4K



- | | |
|---|---------------------------------|
| 1. PoE Camera Ports | 7. Alarm Output |
| 2. RJ45 Network Interface (LAN1)/
USB2.0 | 8. RS485 Interface |
| 3. Audio Output | 9. Power Switch |
| 4. HDMI Video Output | 10.110-220VAC Power Supply Plug |
| 5. USB 3.0 | 11.VGA Video Output |
| 6. Alarm Input | 12.Audio Input |
| | 13.E-SATA |

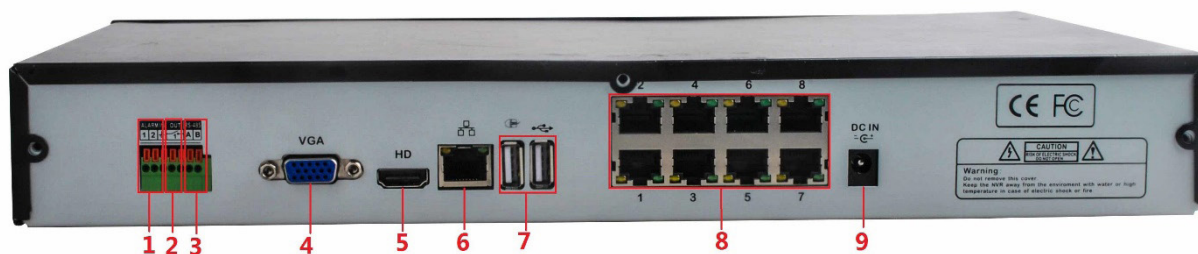
Cameras connect to LAN1 (PoE gigabit network switch)

PRO1600N3-5MP



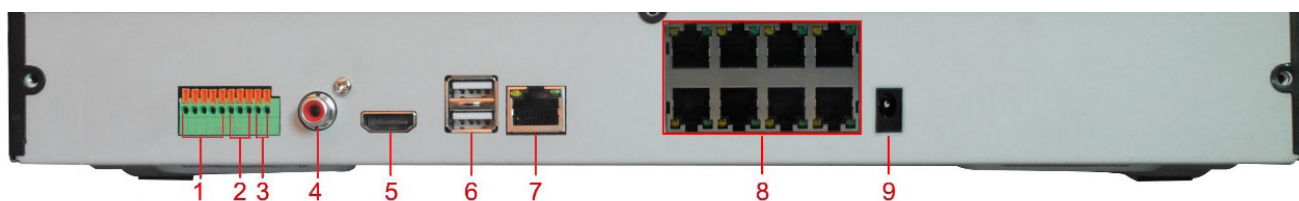
- | | |
|---------------------------|------------------|
| 1. DC48V | 7. USB 2.0 |
| 2. PoE Camera Ports | 8. RS485 |
| 3. RJ45 Network Interface | 9. Alarm output |
| 4. Audio Output | 10. Alarm Input |
| 5. VGA Video Output | 11. Audio Output |
| 6. HDMI Video Output | |

PRO800N2-5MP



- | | |
|---------------------|---------------------------|
| 1. Alarm Input | 6. RJ45 Network Interface |
| 2. Alarm Output | 7. USB 2.0 |
| 3. RS485 | 8. PoE Camera Ports |
| 4. VGA Video Output | 9. DC48V |
| 5. HDMI Output | |

PRO1600N2-4K/PRO800N2-4K



1. Alarm Input
2. Alarm Output
3. RS485
4. Audio Output
5. HDMI Video Output
6. USB 2.0
7. RJ45 Network Interface
8. PoE Camera Ports
9. DC15V

CONNECT TO POWER

Connect the power cabling to an easily accessible AC socket outlet.

INSTALL CAMERAS

Video surveillance laws vary from state to state. Check local regulations to be sure you are operating in a legal manner.

See the IP Camera Installation Guide for detailed installation procedures.

Installation Tips

- When selecting an outside location for your cameras, keep in mind that most cameras are designed to operate between 14°F to 122°F (-10°C to 50°C) with a relative humidity of up to 95%. Avoid installing cameras in direct sunlight, and consider wind chill and other environmental factors, too.
- Mount the camera in an area that is visible, but out of reach. Route the wiring so it does not interfere with power or telephone/cable lines and it should not be where it could be easily cut. Create a plan for camera wire routing and for camera angle.
- Adjust the camera angle so that it covers an area with high traffic as needed. In “high-risk” locations, have more than one camera cover the same area. This provides camera redundancy if a vandal attempts to damage a camera.
- If you position cameras indoors, avoid pointing the camera at a glass window to see outside. This may result in a bright white ring in the night vision image because the light from the night vision LEDs may reflect off the window glass.
- If installed outdoors, the cable and all cable connections must be routed inside the wall.

Take the following placement suggestions under consideration:

- **Cabling Distance From NVR to Camera.** The video signal sent from the camera to the DVR is reduced over distance. The maximum distance allowed is 330 feet (100 meters). A 60 foot cable is included. If you need a cable longer than 60 feet, then use an RG59 cable (with suitable connectors).
- Do not submerge any camera.
- **Mounting.** Ensure the camera is mounted on a stable surface which is capable of supporting 5 times the weight of the camera.
- Avoid direct exposure to the weather. Cameras which are weatherproof may be mounted outside, such as under an eave or other overhang; however, the image will be affected by rain, etc., landing on the lens. Do not allow direct sunlight to land on the lens.



BASIC OPERATION

The NVR Preview screen, which displays live video, acts as the network’s “main” screen. From here, you can select an icon across the top of the screen to access other operations.


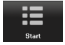
Many screens have several tabs on the screen. These tabs are referred to as Main tabs, Side tabs, and Top tabs. When referencing a specific screen progression, the text references Main tabs/Side tabs/Top tabs in that order. For example, the illustration below would be referenced as System Setting/Network Setting/Basic Setting.

TAB OVERVIEW

MAIN TAB	PURPOSE	SIDE TAB	TOP TABS
Start	Log in/out, initial setup, reboot, and shut down	NA	NA
Preview	View live streaming, activate groups and tours after setup	Channel List/Groups/Tours	NA
		HDD Info/Video Setting	NA
		PTZ/Preset/Cruise/Pattern	NA
Playback	View recorded video, snapshots, and external files	Playback Mode	NA
		Channel List/Groups	NA
		File Search	NA
		Search Type	NA
Backup	Back up files from selected channels	Local Backup	NA
Channel Setting	Connects channels to the system, sets recurring recording schedules, and sets of channel groups.	Channel Connecting	Search Add All Details Import/Export
		Channel Parameter	Display Setting Video Encoding Snapshot Motion Video Loss Video Tampering Privacy Mask
		Schedule Setting	Recording Setting Timing Snapshot
		Manual Operation	Manual Red Snapshot Manual Alarm
		Channel Grouping	Groups Tour Groups
		Smart	Target Count Object Left/Lost Area Detection Line Crossing
Disk Manager	Shows disk storage details and sets up disk grouping.	Storage Management	NA
		Disk Grouping	NA
		Disk Location Map	NA

MAIN TAB	PURPOSE	SIDE TAB	TOP TABS
System Setting	Configures system (time, email and other network settings, alarm and user management, PTZ, and device)	Time Setting	Device Time IPC Timing
		Channel Zero Setting	Global Setting Channel Setting
		Network Setting	Basic Setting
			DDNS Setting Email Setting Advanced Setting Management Platform Telnet Setting
		Alarm Management	Alarm Input Alarm Output Abnormal Setting Linkage Setting
		User Management	NA
		PTZ Setting	NA
		Device Setting	NA
Maintenance	Provides firmware version number. Saves network configuration and allows configuration update.	System Information	Device Information Stream Information Online User
		Log Information	NA
		Config Management	NA
		System Upgrade	Local Upgrade Upgrade IPC
		Auto Maintenance	NA
		Network Monitoring	Network Flow Network Test

INITIAL SETUP

1. Click the  icon; select *LOGIN*. Enter *admin* (user name), skip password for now, and then click **Login**.
2. Click the  icon again; select *GUIDE*. Go through these screens to provide a basic system configuration:
 - *Language setting*: Default: ENGLISH; click **Next**.
 - *Display setting*: Screen resolution default: 1920x1080-P60; click **Next**.
 - *Network setting*: Check *Network Card* dropdown list for *Network Card*. If you only have one LAN port, do not set a static IP address and leave DHCP enabled. If you have more than 1 LAN port, disable DHCP and write down the IP address, mask, and gateway that the DHCP server/router assigns. Click **Next**.
 - *Uniden ProSeries*: QR codes display to download the Uniden ProSeries app. Apple QR code downloads app for iOS version and Android QR code downloads the Android version.
3. Check the *Next time no longer display* box in lower left corner. This series of screens will not display for further startups.
4. Click **Finish**. The Preview screen displays.

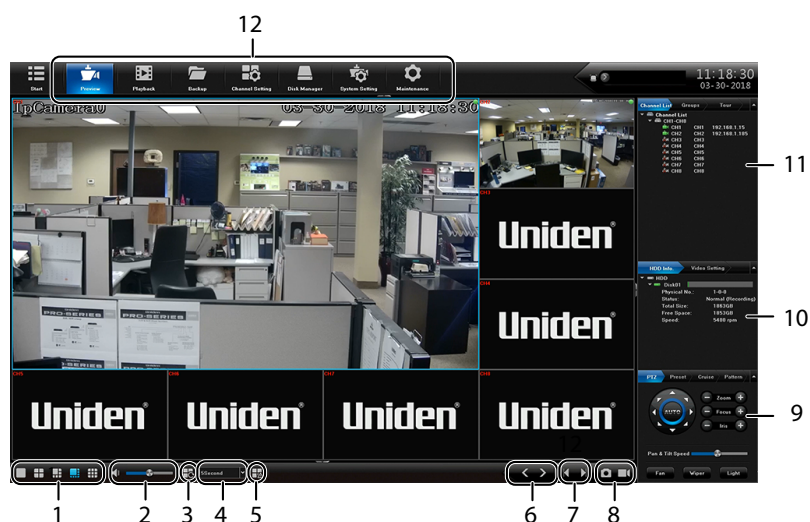
OPERATION QUICK REFERENCE

TO DO THIS	GO TO		
	MAIN TAB	SIDE TAB	TOP TAB
Set system time	System Setting	Time Setting	Device Time
Set up email	System Setting	Network Setting	Email Setting
Add users and set up passwords	System Setting	User Management	NA
Set motion sensitivity	Channel Setting	Channel Parameter	Motion
Set up alarms	System Setting	Alarm Management	Alarm Input (or Alarm Output)
Enable/disable DDNS	System Setting	Network Setting	DDNS Setting
Check and update firmware	Maintenance	System Information	Device Information
Set IP channels	Channel Setting	Channel Connecting	NA
Record Video Manually Scheduled	From Preview screen, right click on a channel screen. Select <i>Start Recording</i> .		
	Channel Setting	Schedule Setting	Recording Setting
Search for Files, Snapshots	Playback	NA	NA
Play back video	Playback	NA	NA
Mask motion sensitive areas	Channel Setting	Channel Parameters	Motion
Block off areas to not record	Channel Setting	Channel Parameters	Privacy Mask
View Channel	Preview	NA	NA
Back up video files	Backup	Local Backup	
Check users currently on the network	Maintenance	System Information	Online User
Download the mobile app	System Setting	Network Setting	QR Code

SCREEN DESCRIPTIONS

PREVIEW SCREEN

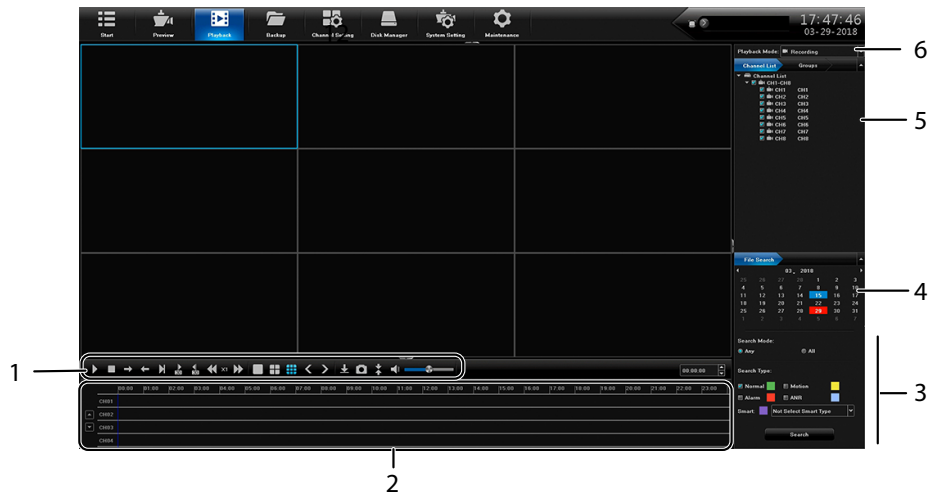
Select Preview; The Preview screen displays. This screen does not have Side, or Top tabs. However, various elements on the screen make operation easier



NO.	ELEMENT	DESCRIPTION
1	Screen configuration	Sets how the screens are displayed (single screen, 4 in one display, etc.).
2	Volume	Adjusts the volume.
3	Tour	Select a Tour Group.
4	Speed	Set how quickly the images change in a tour group.
5	Open Linkage Preview	???
6	Page UP/DOWN	Page up, page down
7	Last/Next Group	Goes to previous or next group
8	Take Snapshot Start/Stop Recording	Take snapshot of current image on selected channel. Click to start and stop recording.
9	PTZ	Set PTZ camera orientation and cruise patterns.
10	HDD Info.	Physical information about HDDs
11	Channel List	Establish Groups and Tours
12	Main Tabs	Links to other areas of the NVR firmware

PLAYBACK MAIN TAB

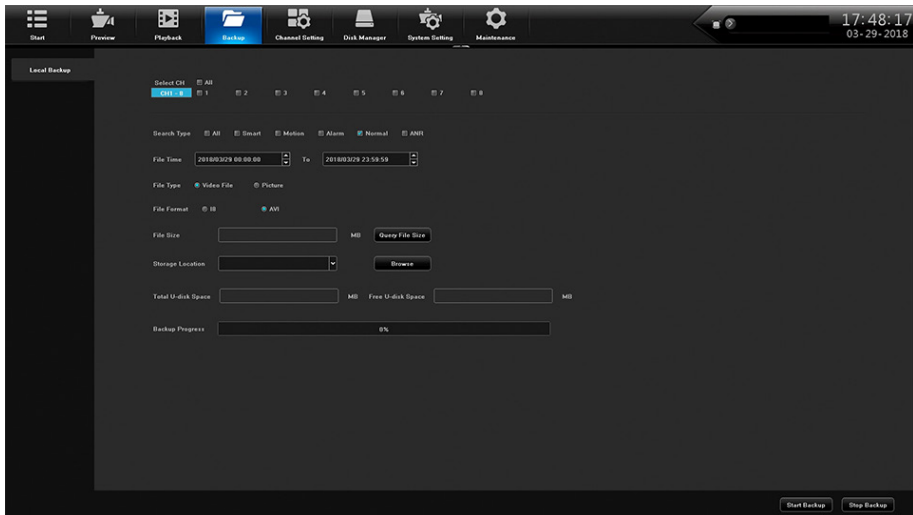
Use the Playback Main tab to select a channel. You can then play back a recorded files and view snapshots.



NO.	ELEMENT	DESCRIPTION
1	Video Controls	Click each icon to control different aspects of playing back video.
2	Playback Control	Click on timeline to skip playback to that spot.
3	Search	Select search parameters.
4	File Search	Select search dates.
5	Channel List/ Groups	Select a channel or a group to search .
6	Playback Mode	Select recorded, external, or snapshot

BACKUP MAIN TAB

Use the Backup Main tab to select files to backup from 1 or more channels.



FIELD	DESCRIPTION
Select CH	Select one or more channels (or all channels) to back up.

FIELD	DESCRIPTION
Search Type	Select a file type to search for: <ul style="list-style-type: none"> • All • Smart • Motion • Alarm • Normal • ANR
File Time	Enter a time frame to search for files.
File Format	Select wither I8 or AVI.
File Size	Select a file size to search for.
Storage Location	Browse to the location where the files will be backed up.
Total U-disk Space	Total U-Disk space available
Free U-disk Space	Remaining U-Disk space
Backup progress	Backup progress status bar
	Click each icon to control different aspects of playing back video.

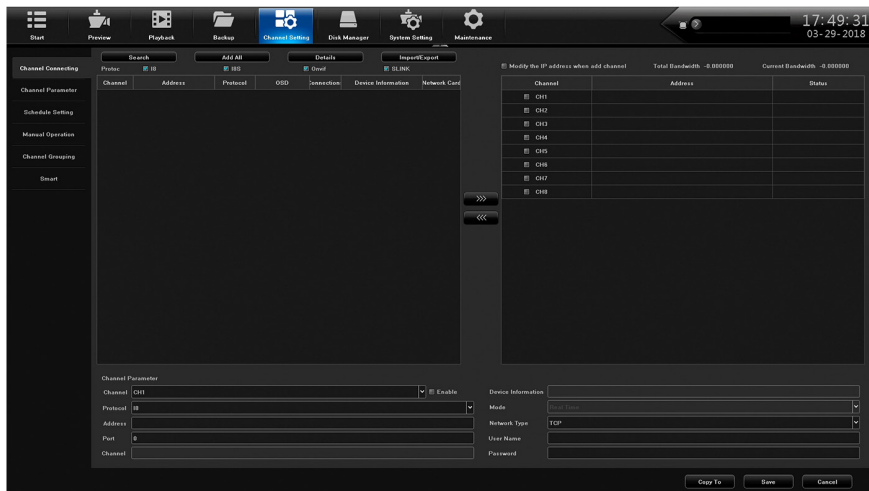
CHANNEL SETTING MAIN TAB

The Channel Setting Main tab lets you add cameras to your network, set up automatic and manual recording schedules, and set up channel groups. It is comprised of the following side tabs:

- Channel Connecting
- Channel Parameter
- Schedule Setting
- Manual Operation
- Channel grouping

Channel Connecting Side Tab

Use this tab to find cameras and connect them to your NVR.



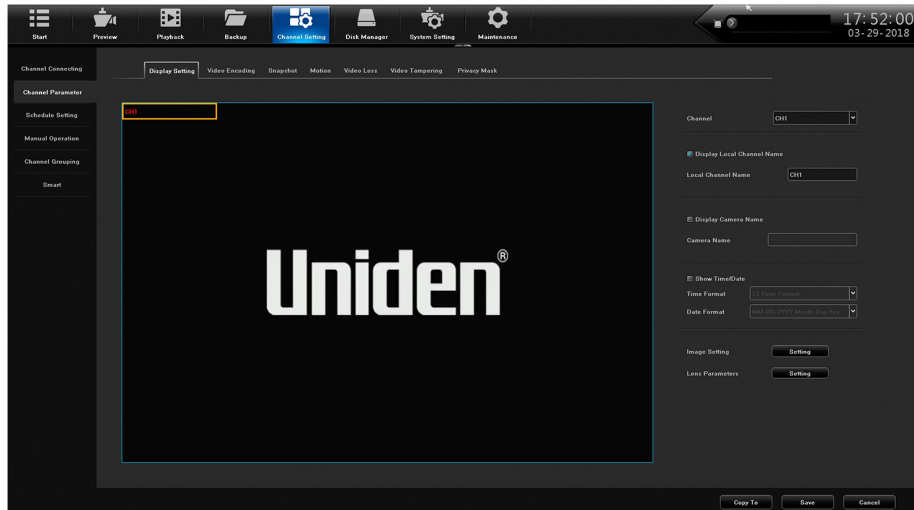
Channel Parameter Side Tab

This side tab has 7 top tabs:

- Display Setting
- Video Encoding
- Snapshot

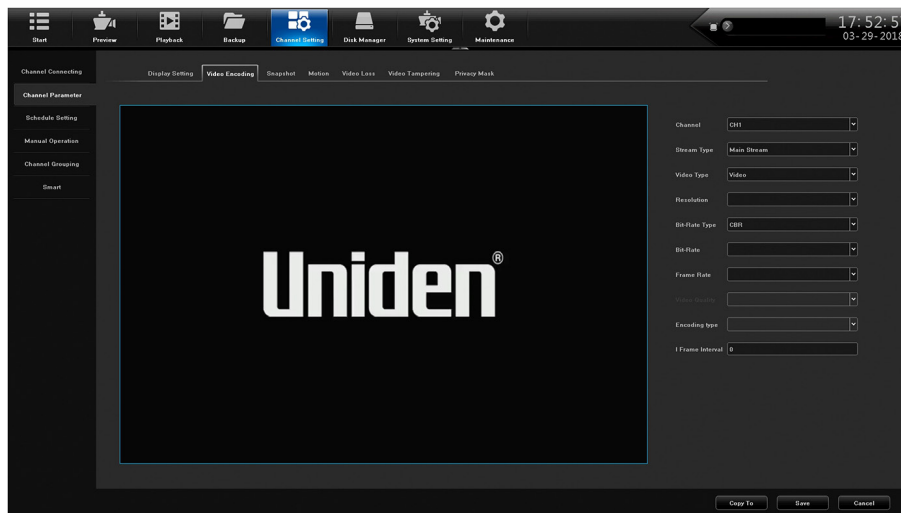
- Motion
- Video Loss
- Video Tampering
- Privacy Mask

Display Setting Top Tab



FIELD	DESCRIPTION
Channel	Select the channel to edit from a dropdown list.
Display Local Channel Name	Check to display the local channel name on the screen.
Local Channel Name	Create or edit the channel name. A popup keyboard displays.
Display Local Camera Name	Check to display the local camera name on the screen.
Local Camera Name	Create or edit the camera name. A popup keyboard displays.
Show Time/Date	Check to display the time/date on the screen.
Time Format	Select 12-hour or 24-hour format to display the time.
Date Format	Select a date format from a dropdown list.
Image Setting	Set brightness, contrast, saturation, and hue levels.
Lens Parameters	Set parameters for such as auto/manual exposure, trigger levels, picture modes, and more.

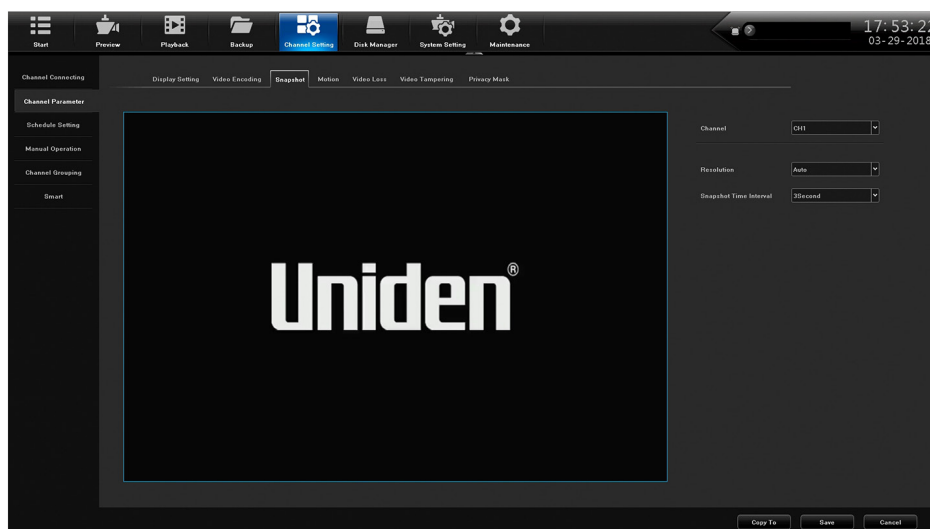
Video Encoding Top Tab



FIELD	DESCRIPTION
Channel	
Stream Type	Select Main Stream or Sub Stream.
Video Type	Select Video or Video and Audio
Resolution	Enter the video resolution.
Bit-Rate Type	Select CBR or VBR
Bit Rate	Enter the bit rate.
Frame Rate	Enter the frame rate.
Encoding Type	Enter the encoding type.
I Frame Interval	Enter the I Frame Interval.

Snapshot Top Tab

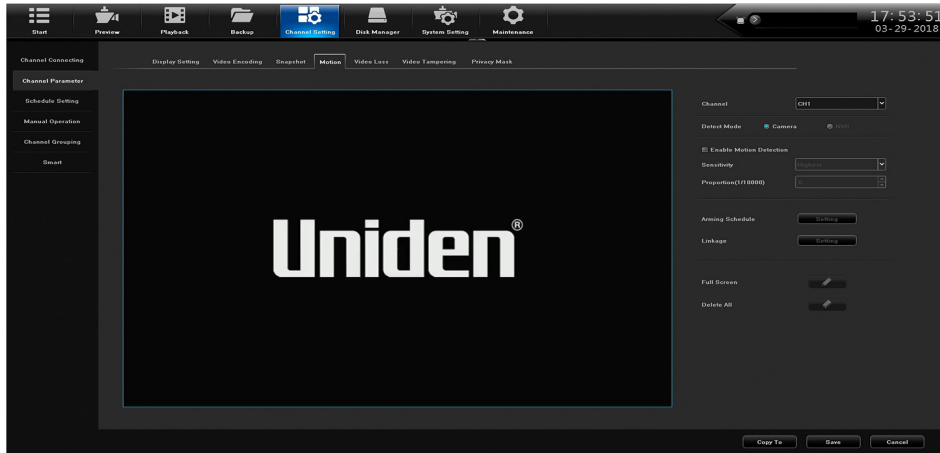
Set up snapshot parameters.



FIELD	DESCRIPTION
Channel	Select a channel to take snapshots.
Resolution	Select an image resolution for the snapshot.

FIELD	DESCRIPTION
Snapshot Time Interval	Set how long the system pauses between snapshots.

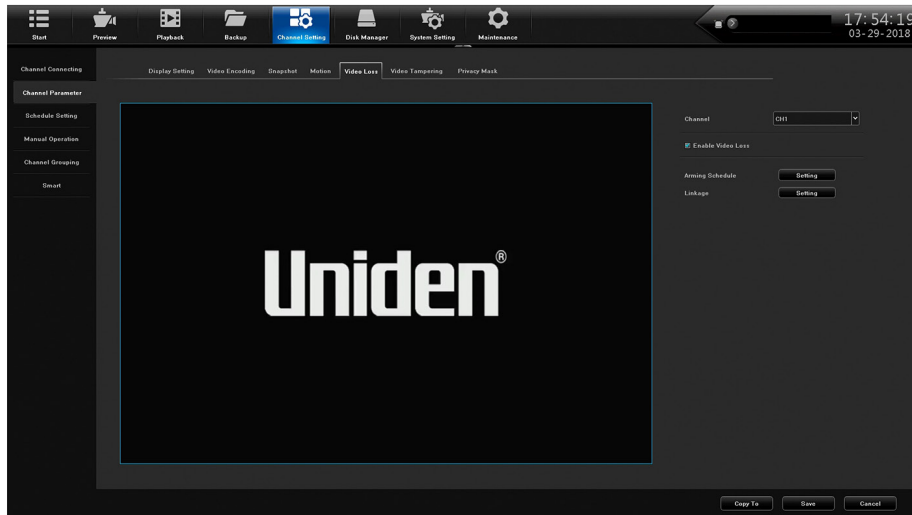
Motion Top Tab



FIELD	DESCRIPTION
Channel	Select a channel.
Detect Mode	Select either <i>Camera</i> or <i>NVR</i> .
Enable Motion Detection	Set motion detection Sensitivity and Proportion.
Arming Schedule	Arming Schedule popup screen displays to set up to 8 snapshots per 24 hour period. Can also copy schedule to all or selected days.
Linkage	Alarm Linkage popup screen displays to set alarm linkage parameters.
Full Screen	Grid displays over image area to indicate areas that WILL trigger motion detection. Right click and hold on the screen, then drag a box over the areas you do NOT want to trigger motion detection. That box will delete the grid lines, indicating that that specific area will NOT trigger motion detection. Click Save .
<i>Delete All</i>	Delete grid.

Video Loss Top Tab

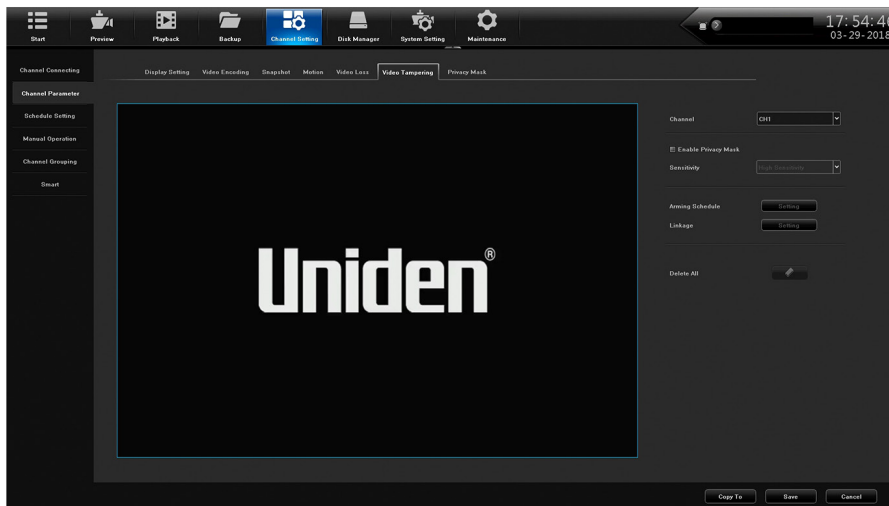
When video loss is enabled, you can set up a schedule to monitor for it.



FIELD	DESCRIPTION
Channel	Select a channel
Enable Video Loss	Select to allow video loss monitoring.
Arming Schedule	Arming Schedule popup screen displays to set up to 8 arming periods per 24 hour period. Can also copy schedule to all or selected days.
Linkage Setting	Popup displays to select linkage type, alarm output, PTZ Linkage, and linkage status on channels.

Video Tampering Top Tab

Like the Video Loss top tab, this screen sets up video tampering monitoring.



FIELD	DESCRIPTION
Channel	Select a channel.
Enable Privacy Mask	Select to allow privacy masking
Arming Schedule	Arming Schedule popup screen displays to set up to 8 arming periods per 24 hour period. Can also copy schedule to all or selected days.

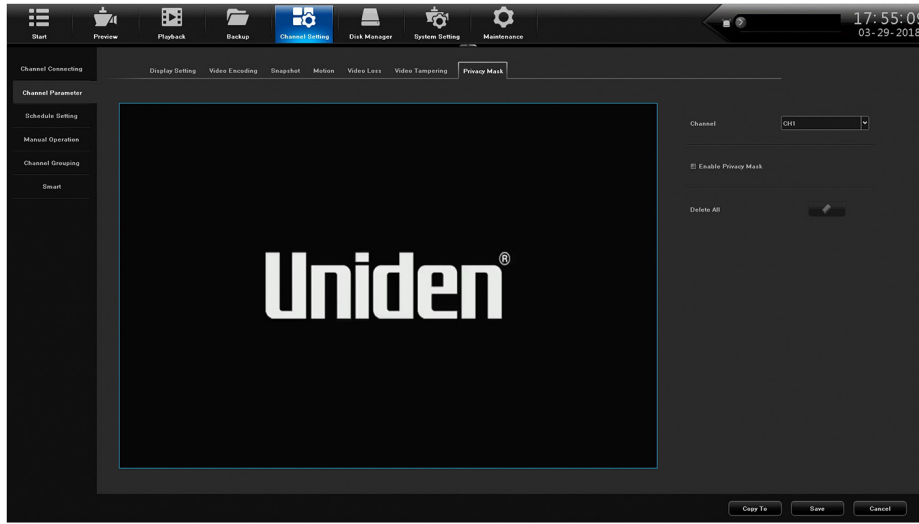
FIELD	DESCRIPTION
Linkage Setting	Popup displays to select linkage type, alarm output, PTZ Linkage, and linkage status on channels.
Delete All	Delete all settings.

Privacy Mask Top Tab

Privacy masking lets you mark off an area of the screen to not be recorded. These areas could range from the lower half of a room (close to the floor to avoid pets triggering motion detection) to a keypad on an ATM.

Left click in the live view and drag out a square or rectangle.

Click **Save** and the area selected turns black.



FIELD	DESCRIPTION
Channel	Select a channel.
Enable Privacy Mask	Select to allow privacy masking
Delete All	Delete all unsaved masks.

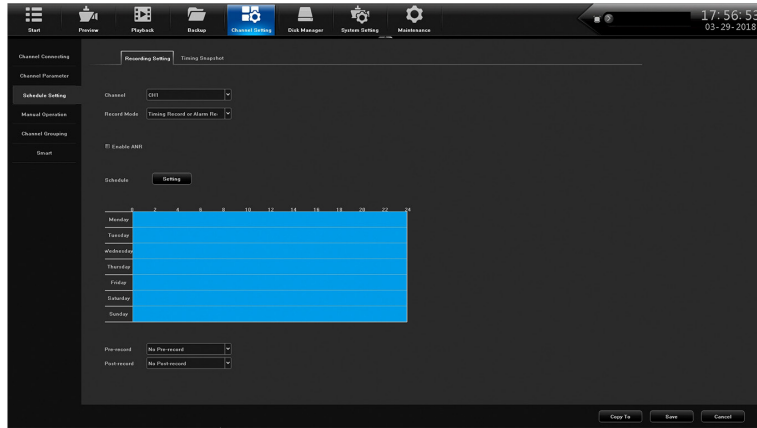
Schedule Setting Side Tab

Channel Setting has two top tabs:

- Recording Setting
- Timing Snapshot

Recording Setting Top Tab

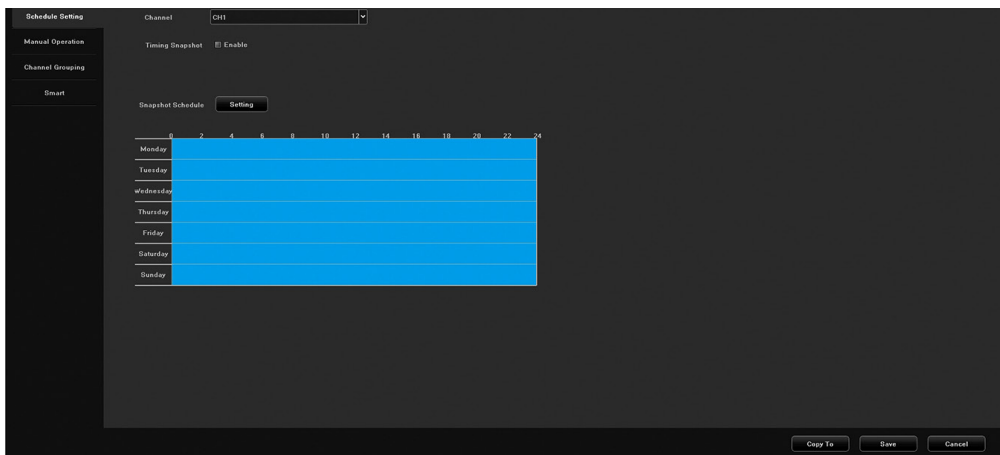
This top tab helps you set up a 24-hour recording schedule for Monday - Sunday.



FIELD	DESCRIPTION
Channel	Select a channel to get a snapsho schedule established.
Record	Select a recording mode from the dropdown list.
Enable ANR	Check to enable Automatic Network Recovery. <i>Only applicable if the camera has a microSD card.</i>
Schedule	Click Setting to display the Arming Schedule popup screen to set 1 to 8 recording periods per 24 hour period. Can also copy schedule to all or selected days. When the schedule is saved and the window is closed, the schedule reflects in the blue schedule display.
Pre-record	Select the number of seconds to be recorded before the scheduled recording begins.
Post-record	Select the number of seconds to be recorded after the scheduled recording ends.

Timing Snapshot Top Tab

Timing Snapshot helps you establish a schedule to automatic snapshots from your cameras. it is similar to Recording Setting top tab.



FIELD	DESCRIPTION
Channel	Select a channel to get a snapshot schedule established.
Timing Snapshot	Check to enable a schedule to be set up.
Snapshot Schedule	Click Setting to display the Arming Schedule popup screen to set 1 to 8 snapshot periods per 24 hour period. Can also copy schedule to all or selected days. When the schedule is saved and the window is closed, the schedule reflects in the blue schedule display.

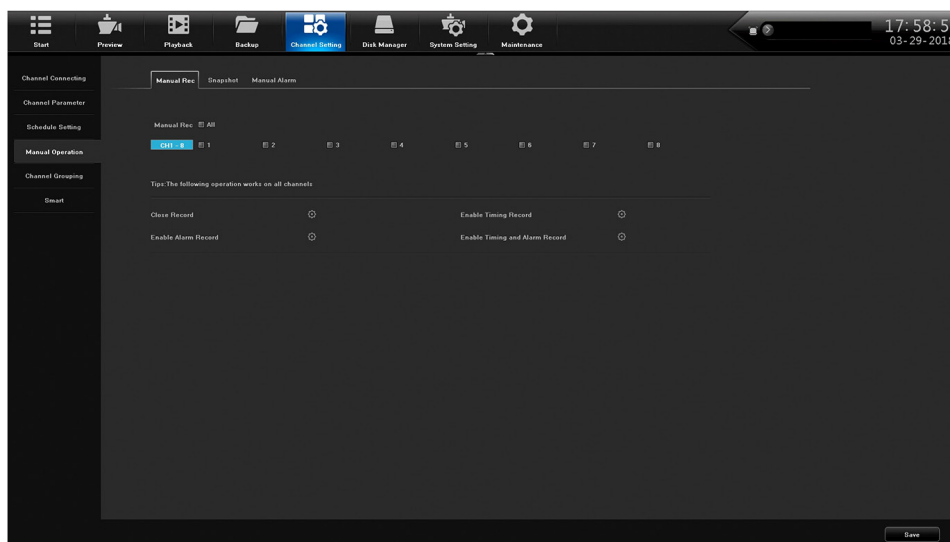
Manual Operation Side Tab

This side tab has three top tabs:

- Manual Rec
- Snapshot
- Manual Alarm

Manual Rec Top Tab

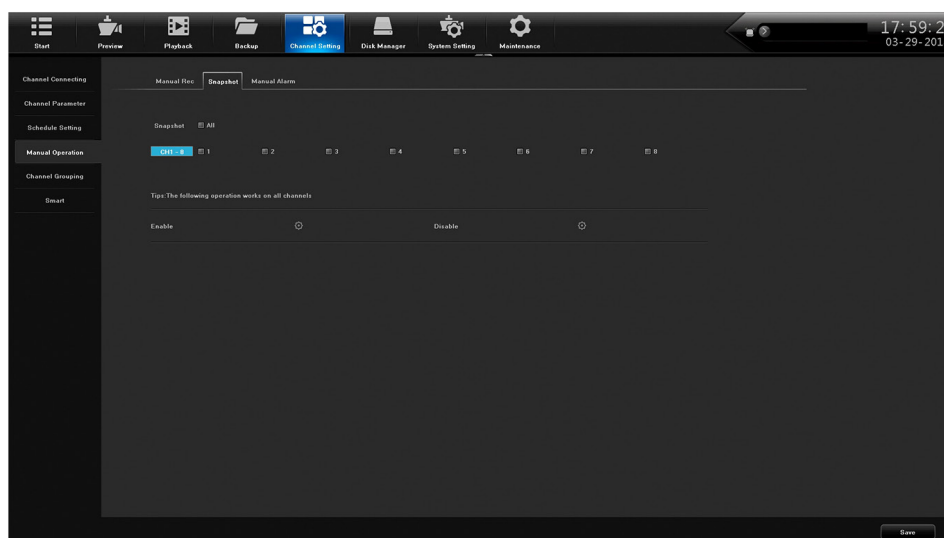
The Manual Recording top tab lets you allow manual recording on all channels or specific channels.



FIELD	DESCRIPTION
Manual Rec	Select ALL to allow manual recording on all channels.
CH1-X	Select a specific camera or cameras to allow manual recording.

Snapshot Top Tab

The Snapshot top tab lets you take snapshots on all channels or specific channels.

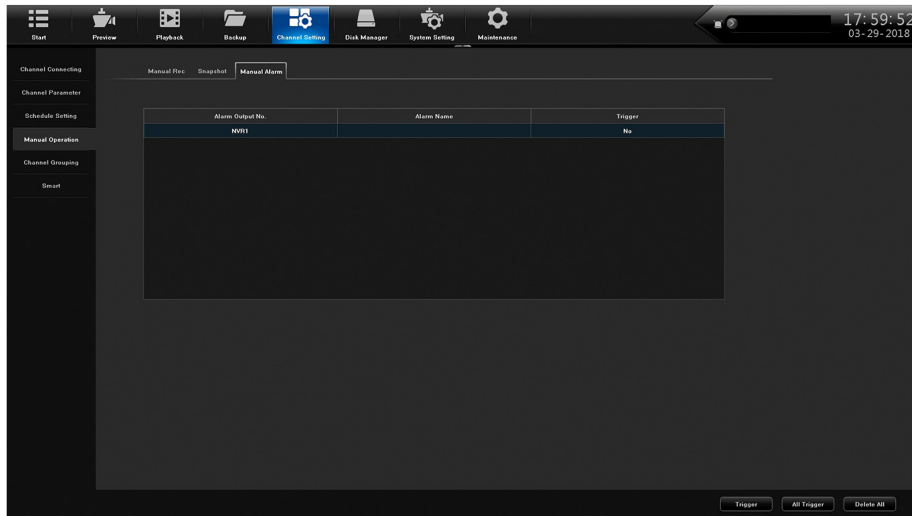


FIELD	DESCRIPTION
Snapshot	Select ALL to allow snapshots on all channels.

FIELD	DESCRIPTION
CH1-X	Select a specific camera or cameras to allow snapshots.

Manual Alarm Top Tab

This tab provides a list of the alarm output numbers, their alarm names, and whether or not the alarms are enabled (able to be triggered).



FIELD	DESCRIPTION
Trigger	Set a selected alarm to trigger. Also, cancel all triggered alarms if All Trigger selected.
All Trigger	Select All alarms to trigger.
Delete All	Delete all alarms.

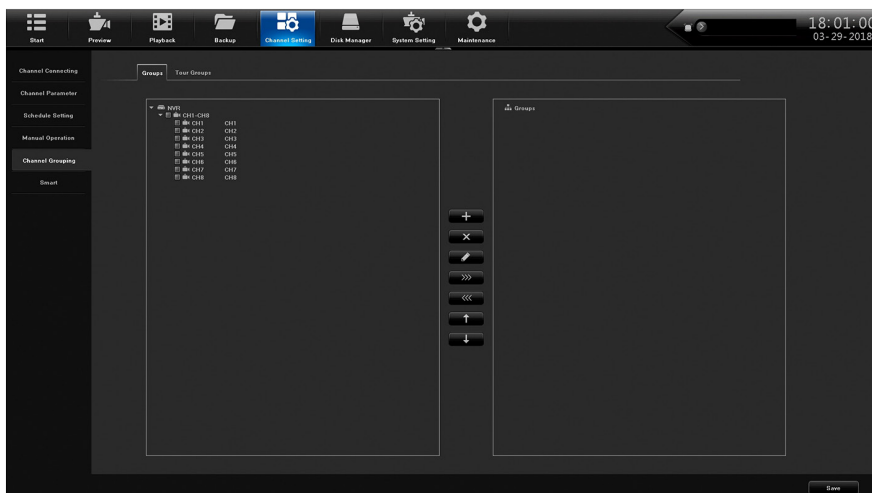
Channel Grouping Side Tab

Channel Grouping has two side tabs:

- Group
- Tour Groups

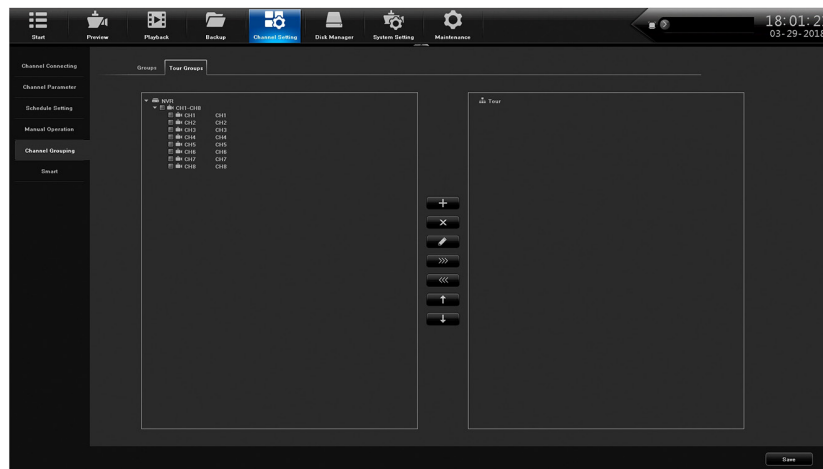
Groups Top Tab

The Groups top tab lets you set up groups and add channels to those groups. For example, you may have a group called Front Lobby and add all cameras related to the front lobby (Front Door, Lobby ATM, etc) to that group. The center icons let you add, delete, reorder, and name the tour groups..



Tour Groups Top Tab

Once you have groups set up, you can arrange them in a specific order for display. For example, you can have all Lobby group cameras display, then all Back Entrance cameras display, etc. The center icons let you add, delete, reorder, and name the tour groups.



Smart Side Tab

This side tab displays the analytic features that are available according to specific camera models. Not every top tab displays for every camera.

Common analytic tabs are:

- Target Count -
- Object Left/Lost
- Area Detection
- Line Crossing

1. For each of the Smart top tabs, enable the feature.
2. Set up the features of each tab and save.
3. From Preview, select the circle icon in the bottom icon bar. This will allow the analytics to display on the screen.

DISK MANAGER MAIN TAB

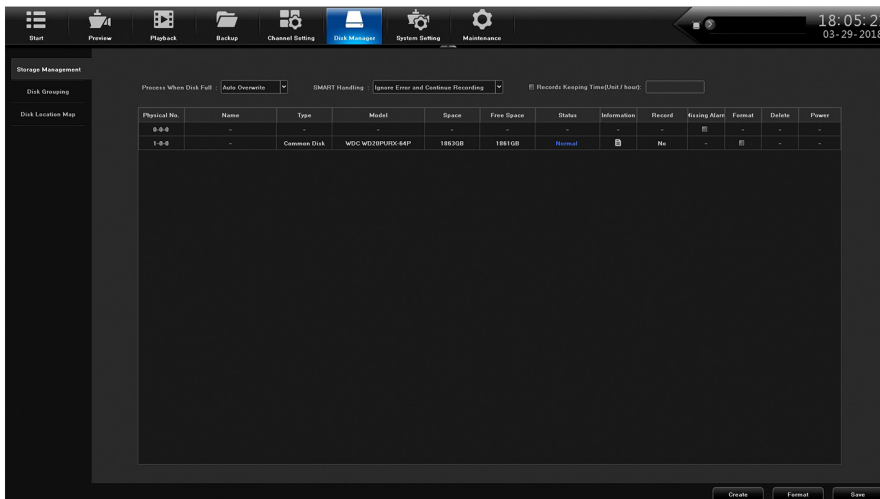
The Disk Manager Main tab lets you manage storage requirements and channel groups. It also provides an image of your model's motherboard, highlighting HDD locations. It has the following side tabs:

- Storage Management
- Disk Grouping
- Disk Location Map

Storage Management Side Tab

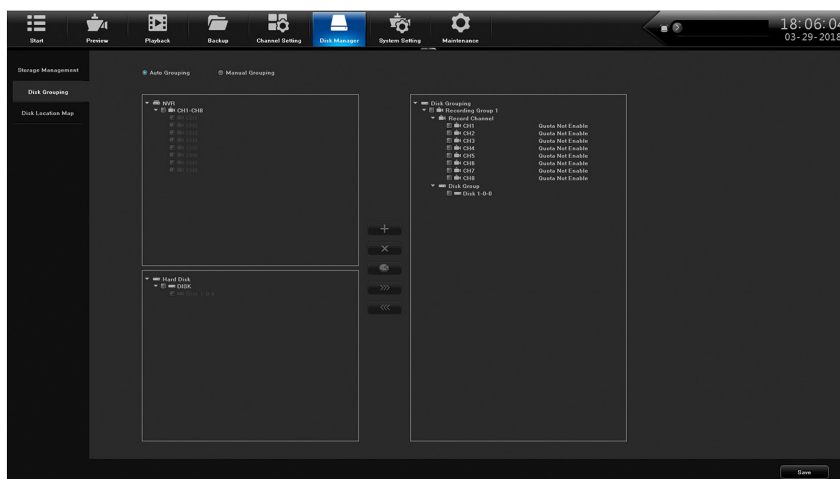
The Storage Management tab gives you information about the HDDs and their current capacities. There are two editable fields:

- Missing Alarm - Check this field to allow an alarm if the system cannot detect the HDD. Click **Save**.
- Format - Check this field to reformat the HDD. Click **Format**.



Disk Grouping Side Tab

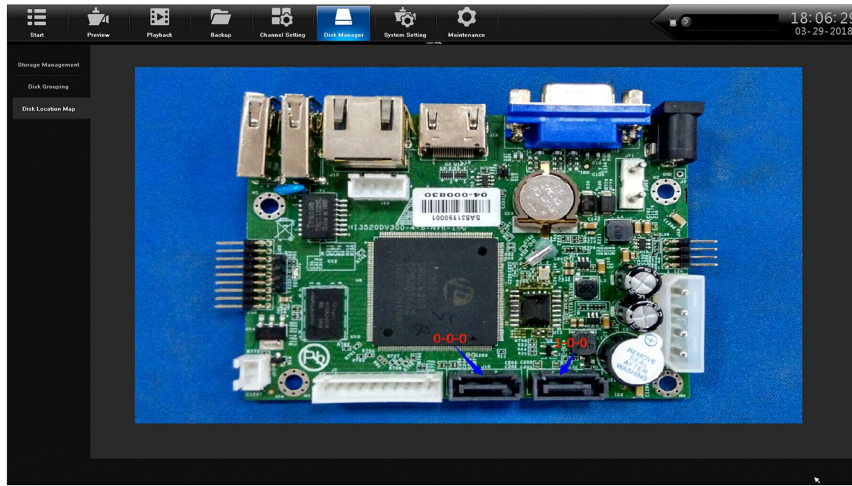
The Disk Grouping side tab lets you assign cameras to different HDDs if your system has more than one HDD.



FIELD	DESCRIPTION
Auto Grouping	Select to have the system automatically group the channels on HDDs.
Manual Grouping	Select to manually group the channels on HDDs.

Disk Location Side Tab

The Disk Location side tab shows a photo of that models motherboard, highlighting the HDD locations.



Representation only; images are unique to each model.

SYSTEM SETTING MAIN TAB

The System Setting main tab establishes system configuration. It has the following side tabs:

- Time Setting
- Channel Zero Setting
- Network Setting
- Alarm Management
- User Management
- PTZ Setting
- Device Setting

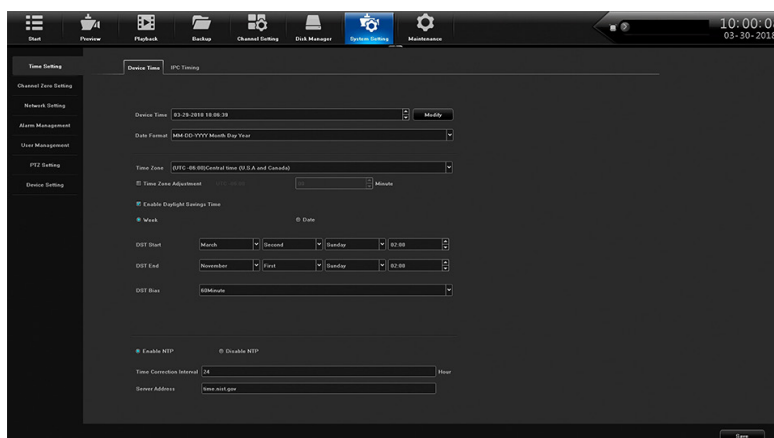
Time Setting Side Tab

The Time Setting Side Tab has two top tabs:

- Device Time
- IPC Setting
- . Line Crossing Top Tab

Device Time Top Tab

Use this tab to set time of day, date format, time zone, daylight savings time, and NTP.



FIELD	DESCRIPTION
Device Time	Adjust time and date through a popup keypad. Click Modify to save the change.
Date Format	Select a format style from a dropdown box to display the date.
Time Zone	Select local time zone.
Time Zone Adjustment	Fine tune the time zone if needed.
Enable Daylight Savings Time	Check this field to enable daylight savings time.
DST Start DST End DST Bias	Enter the start and end month/day/time that DST starts and ends.

NVR systems have a CMOS clock button cell battery located on the PC board to maintain time should power fail.

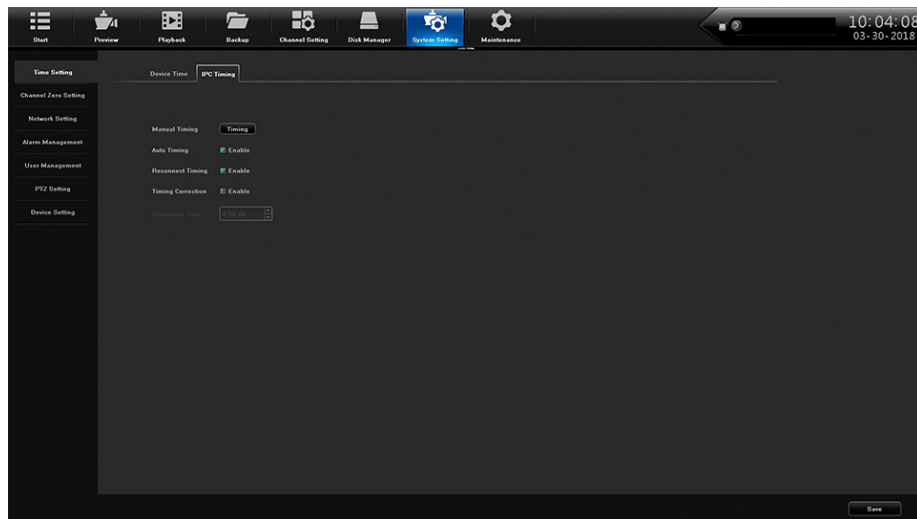
CAUTION! RISK OF EXPLOSION IF BATTERY IS REPLACED WITH AN INCORRECT TYPE. DISPOSE OF USED BATTERIES ACCORDING TO INSTRUCTIONS.

MISE EN GARDE! RISQUE D'EXPLOSION SI LA PILE EST REMPLACÉE PAR UNE PILE DE TYPE INCORRECT. VEUILLEZ JETER LES PILES USÉES EN RESPECTANT LES INSTRUCTIONS.

IPC Timing Top Tab

This top tab allows you to enable or disable the following:

- Auto Timing
- Reconnect Timing
- Timing Correction



Channel Zone Setting Side Tab

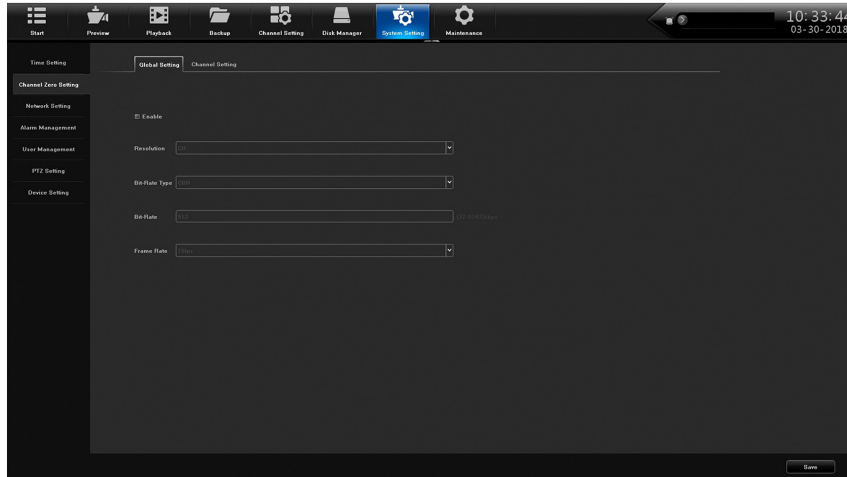
Channel Zero compresses selected cameras into a single image when using the mobile app.

The Time Setting side tab has two top tabs:

- Global Setting
- Channel Setting

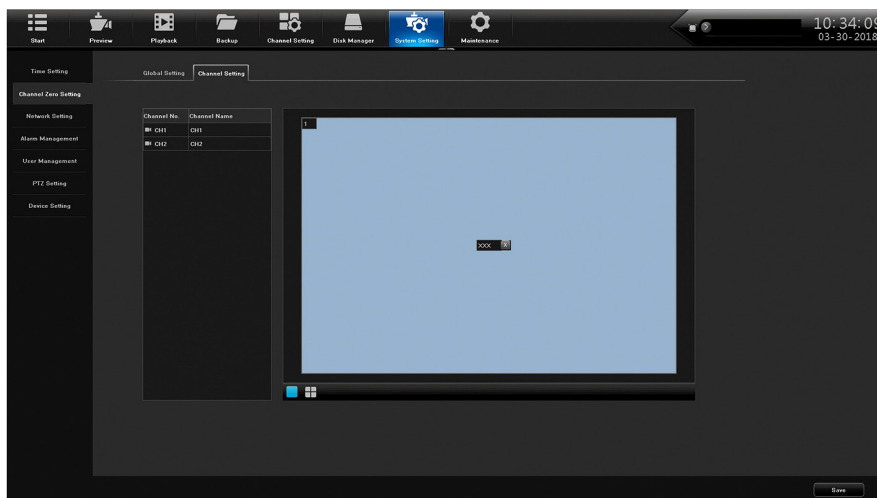
Global Setting Top Tab

Select Enable to configure the channels for viewing on the app.



Channel Setting Top Tab

1. Select the multiview icon below the screen setup. the screen divides into the number of screens on the icon.
2. Select a channel to display in that location. that channel number displays on the screen.
3. Repeat for all channels.



Network Setting Side Tab

The Network Setting side tab provides DDNS, email setting, and other network configuration screens. It has six top tabs:

- Basic Setting
- DDNS Setting
- Email Setting
- Advanced Setting
- Management Platform
- Telnet Setting

Basic Setting Top Tab

FIELD	DESCRIPTION
Network Card	Select the applicable LAN.
MAC Address	MAC address displays.
Network Status	Network status displays.
DHCP / Static IP	Select DHCP or Static IP. If selecting Static IP, IP Address, Mask, and Gateway fields display
DNS Address	Use the automatically selected DNS address or enter DNS addresses
Default Route	LAN for route displays

DDNS Setting Top Tab

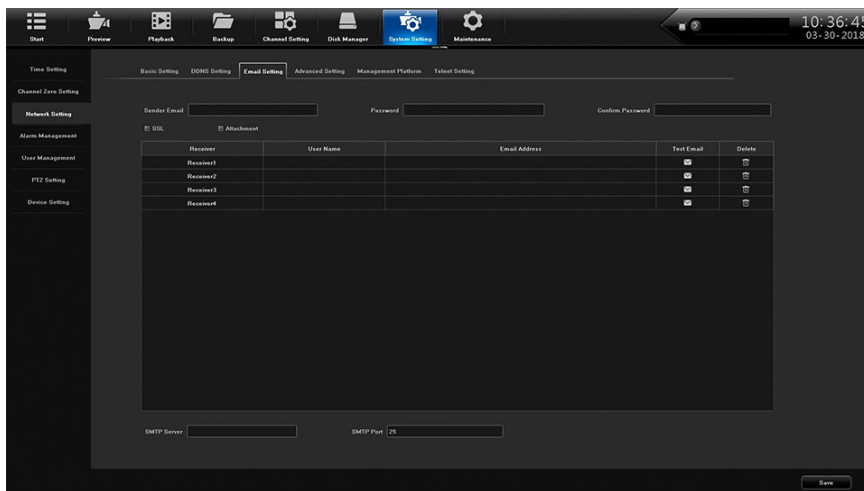
Select Enable or Disable DDNS. If DDNS is enabled, the following fields can be edited:

- DDNS Type
- Server Address
- Port
- User Name
- User Password
- Confirm Password
- Domain
- Update Interval (minutes)

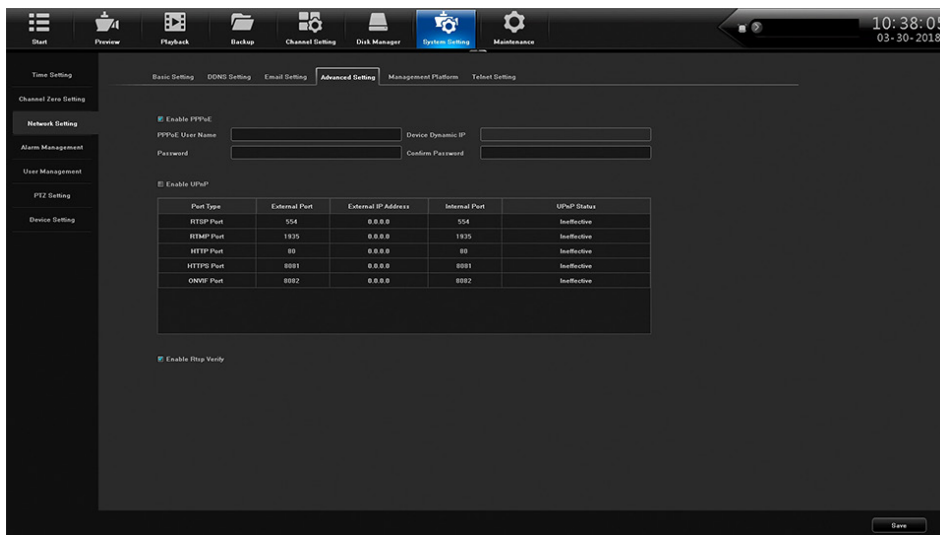
Email Setting Top Tab

With email set up, the system can notify you of alarms and other activity. Double-click on the following fields to set up email contacts through a popup keyboard.

- Sender Email
- Password
- Confirm Password
- User Name
- Email Address



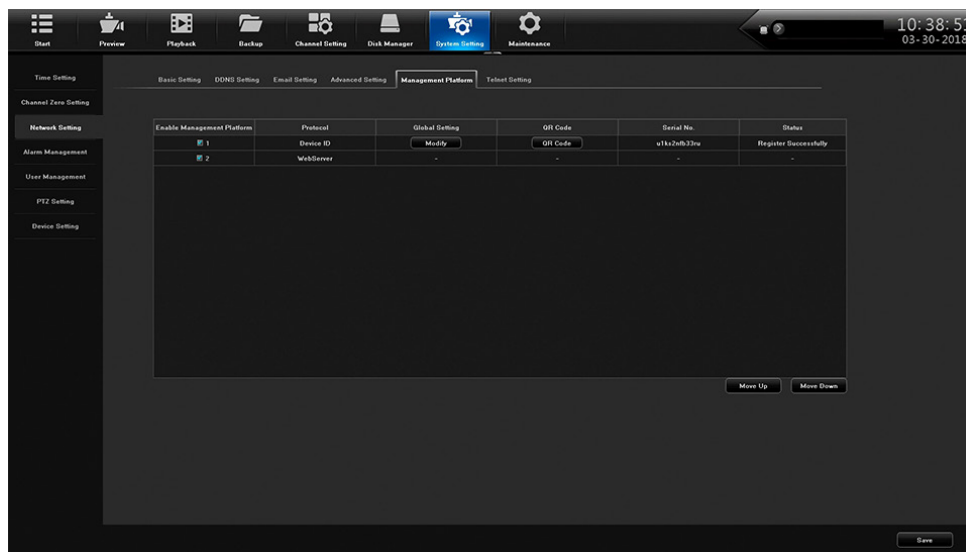
Advanced Setting Top Tab



FIELD	DESCRIPTION
Enable/Disable PPPoE	Enable PPPoE to display and set the following: <ul style="list-style-type: none"> • PPPoE User Name • Device Dynamic IP • Password • Confirm password
Enable/Disable UPnP	Select this field to enable UPnP.
Enable/Disable Rtsp Verify	Select this field to enable Rtsp Verify.

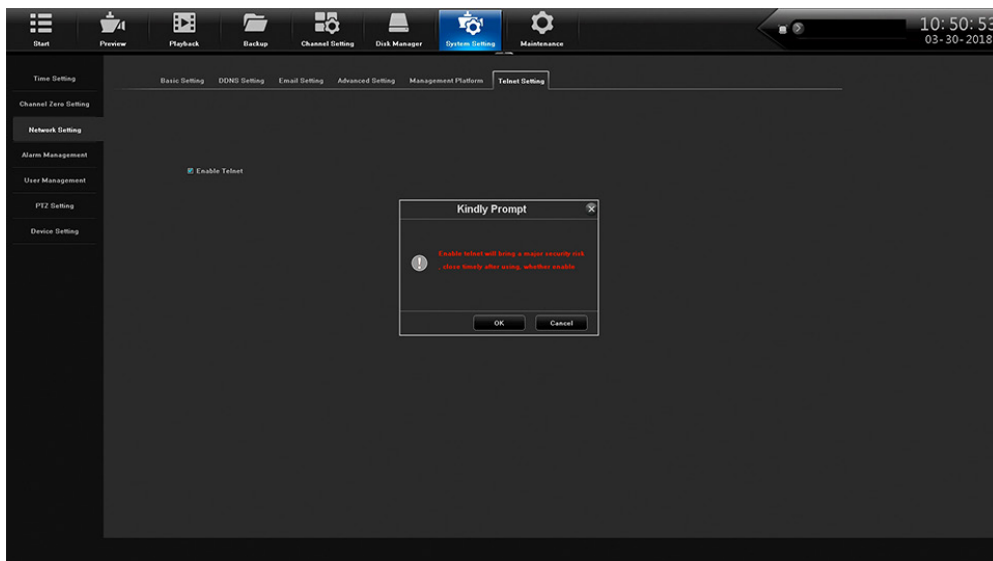
Management Platform Top Tab

1. Select *QR Code* for the Device ID, Apple, and Andoid mobile apps. Use the QR codes displayed to download the Uniden ProSeries mobile app for your specific platform..
2. Set up account in the app. When adding the device, use Device ID QR code from this screen or from the sticker on the device itself.



Telnet Setting Top Tab

If you enable Telnet, be aware that there is a possibility of security issues resulting from a user on one computer logging into another computer on the network.

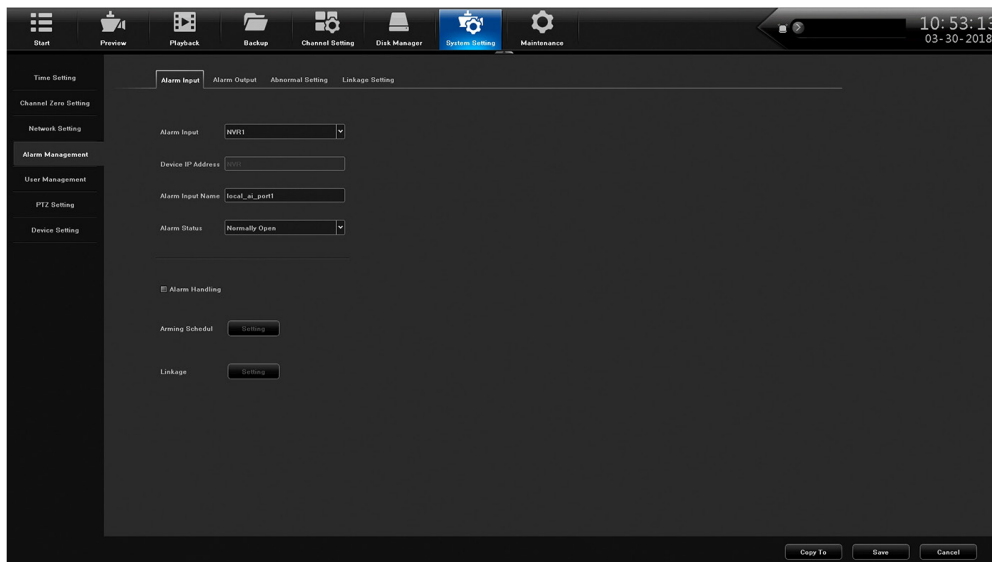


Alarm Management Side Tab

The Alarm Management lets you set up alarm input and output. It has four top tabs:

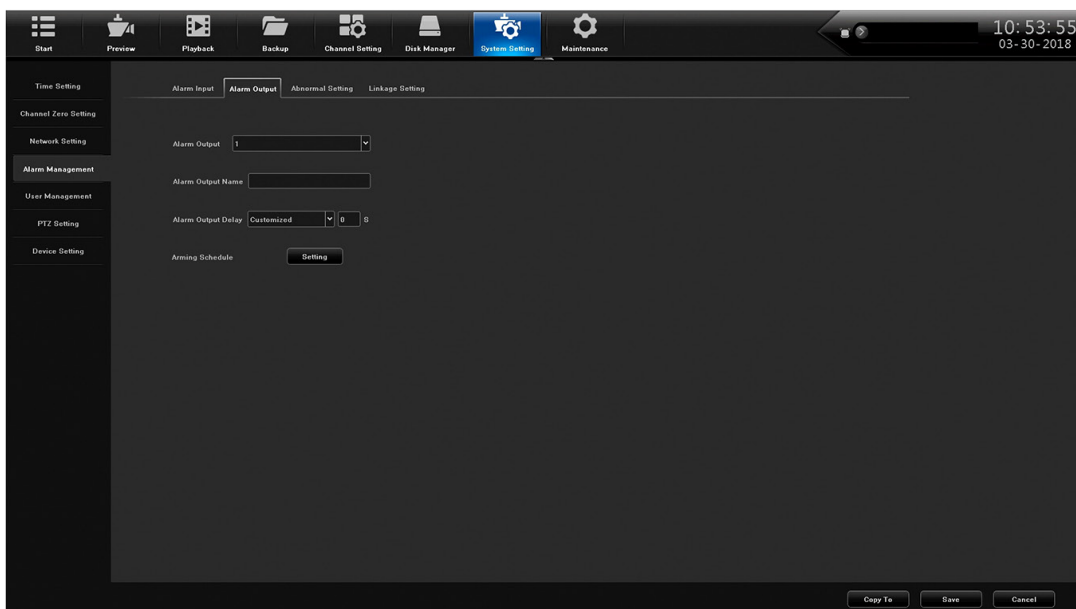
- Alarm Input
- Alarm Output
- Abnormal Setting
- Linkage Setting

Alarm Input Top Tab



FIELD	DESCRIPTION
Alarm Input	Select alarm input source from dropdown menu.
Device IP Address	Enter the device's IP address
Alarm Input Name	enter the alarm name from the popup keyboard.
Alarm Status	Select Normally Open or Normally Closed.
alarm Handling	If Alarm Handling is selected, you can access the Arming Schedule and Linkage Schedule by selecting Setting.

Alarm Output Top Tab

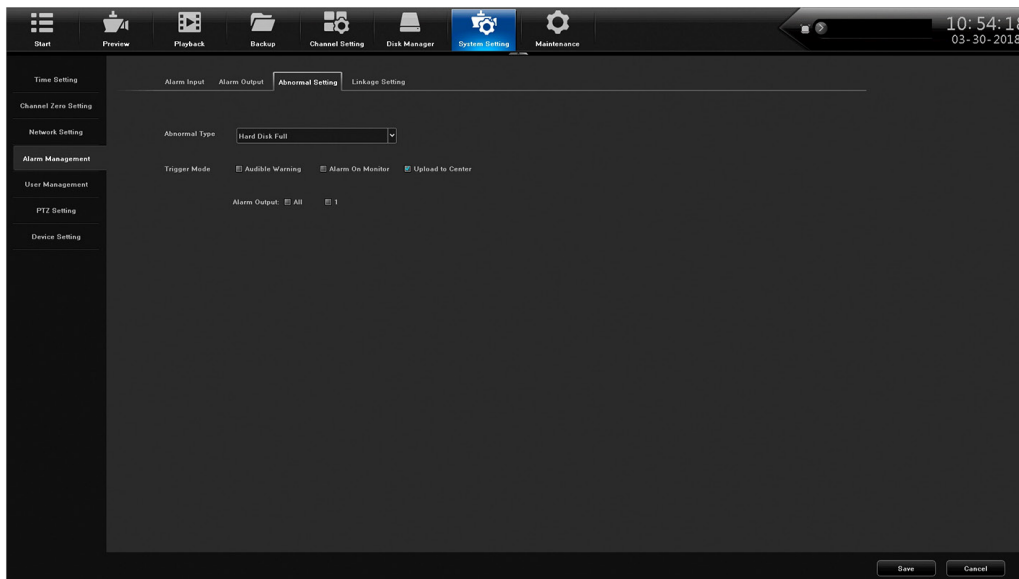


FIELD	DESCRIPTION
Alarm Output	Select the alarm output from a dropdown list.
Alarm Output Name	Click in this field to enter a name for the alarm using the popup keyboard.
Alarm Output Delay	Use the dropdown menu to select an alarm output delay time in seconds.

FIELD	DESCRIPTION
Arming Schedule	Select Setting to enter an armng schedule in the Arming Schedule popup screen.

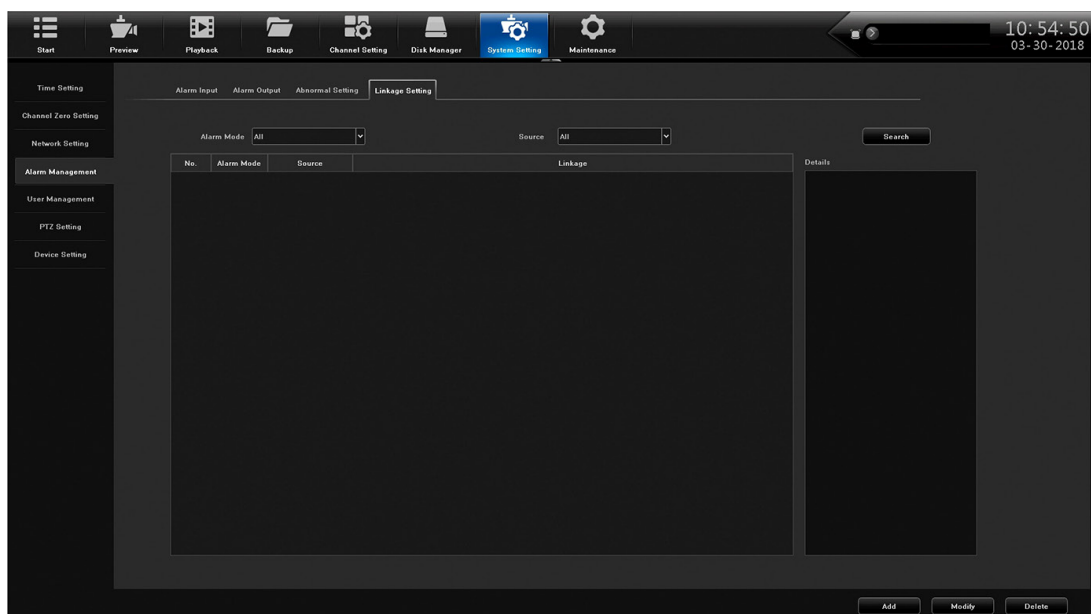
Abnormal Setting Top Tab

Use this tab to establish the abnormal conditions that will trigger alarms.



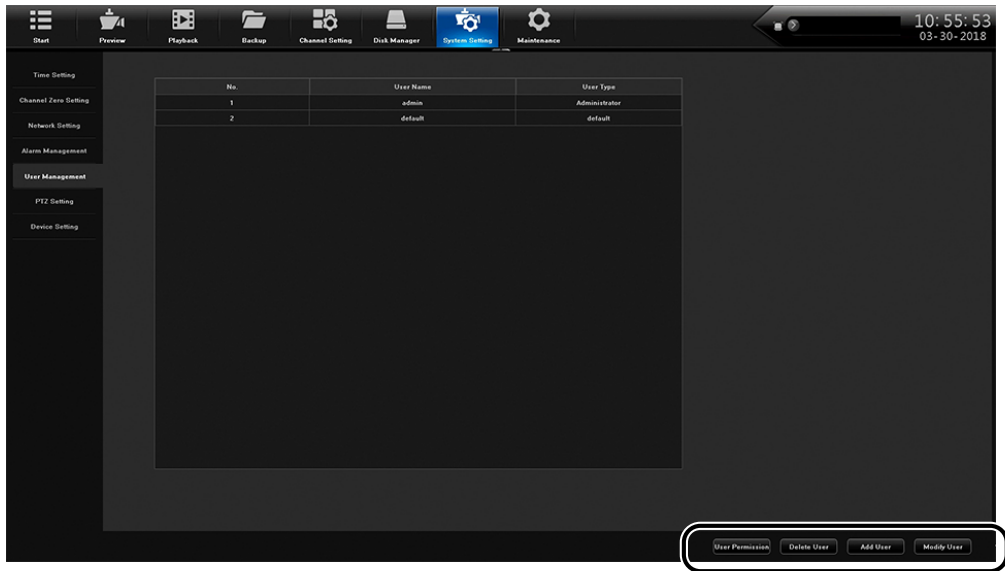
FIELD	DESCRIPTION
Abnormal Type	Select an abnormal condition fro mthe dropdown list.
Trigger Mode	Select a triggered alarm notification method.
Alarm Output	Select ALL or 1.

Linkage Setting Top Tab



User Management Side Tab

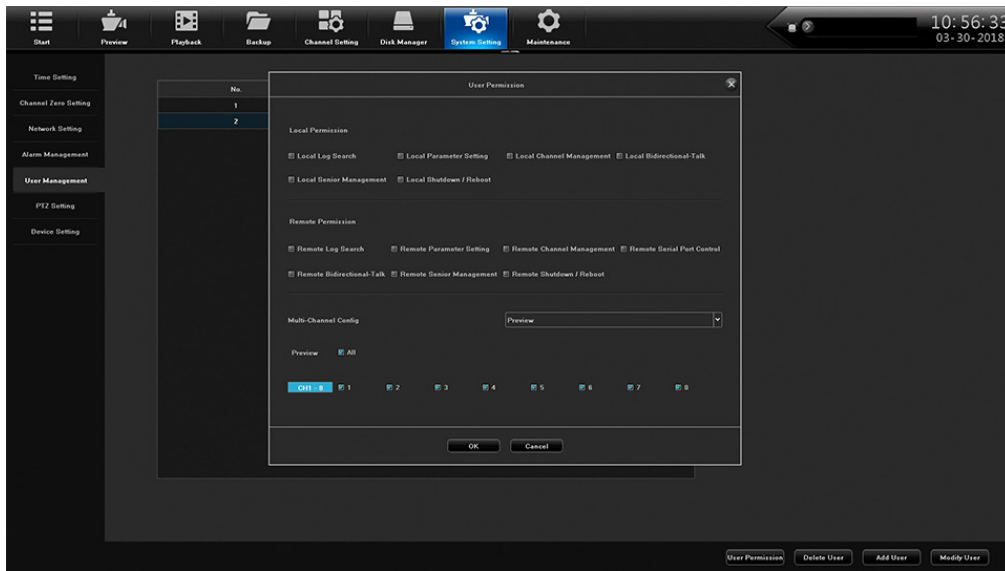
This tab lets you add and delete users, modify existing user’s profiles, and set user permissions through action buttons on the bottom of the screen.



Action Buttons

User Permission

Select a user and User Permission and the following screen displays:



FIELD	DESCRIPTION
Local Permission	Select local permissions to assign to the selected user.
Remote Permission	Select remote permissions to assign to the selected user.
Multi-Channel Config	Select other channels to use this same configuration.

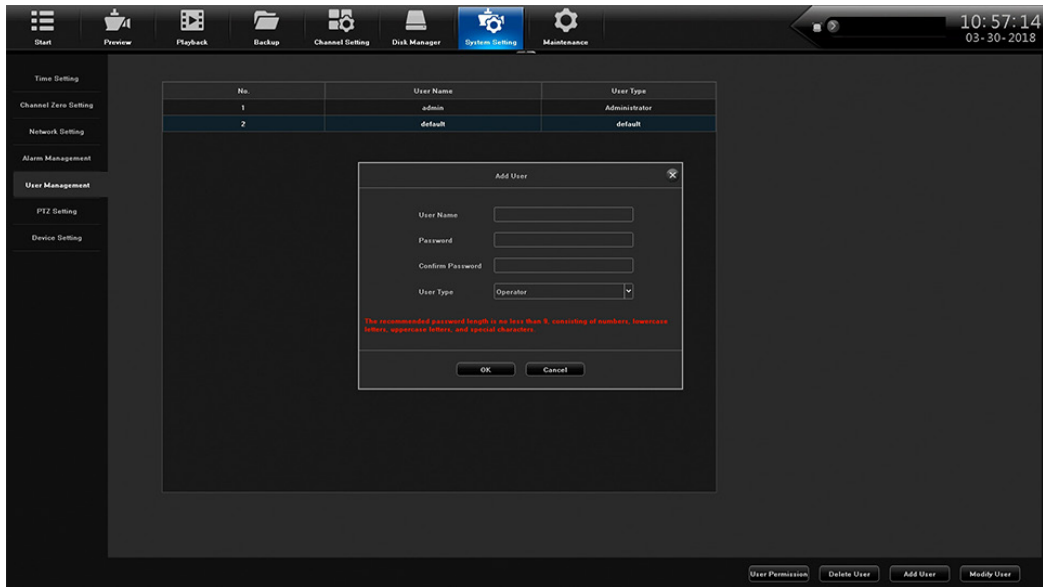
Delete User

Select a user to delete and click on Delete User. A Confirmation prompt displays.

Add User

Select Add User to add additional users to the network. The Add User screen displays, allowing you to enter the following:

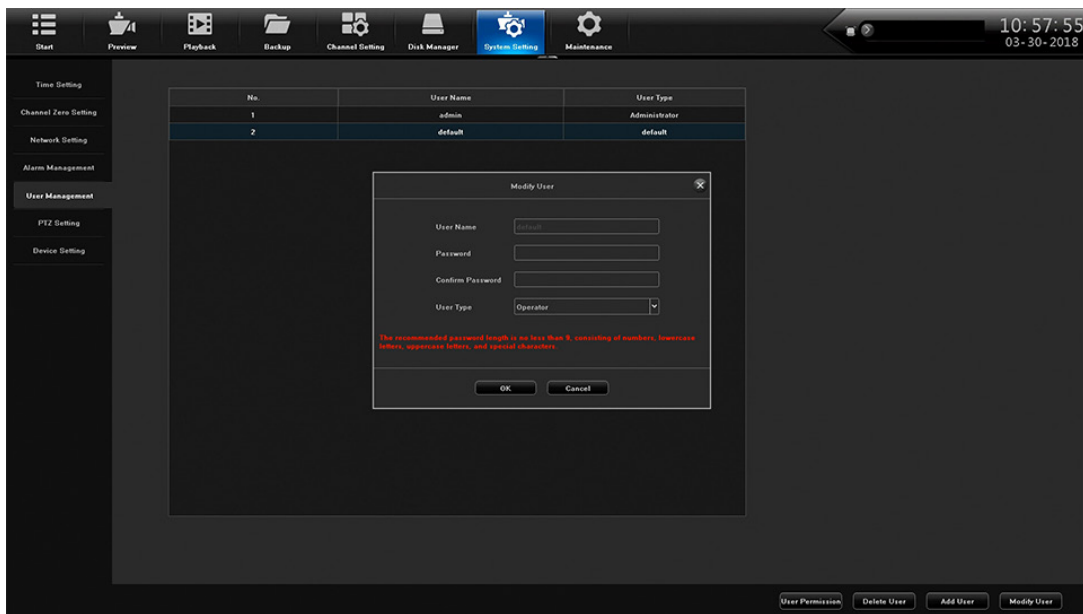
- User Name
- Password
- Confirm Password
- User Type



Modify User

Select Modify User to change users' network profiles. The same Modify User screen displays, allowing you to edit the following:

- User Name
- Password
- Confirm Password
- User Type

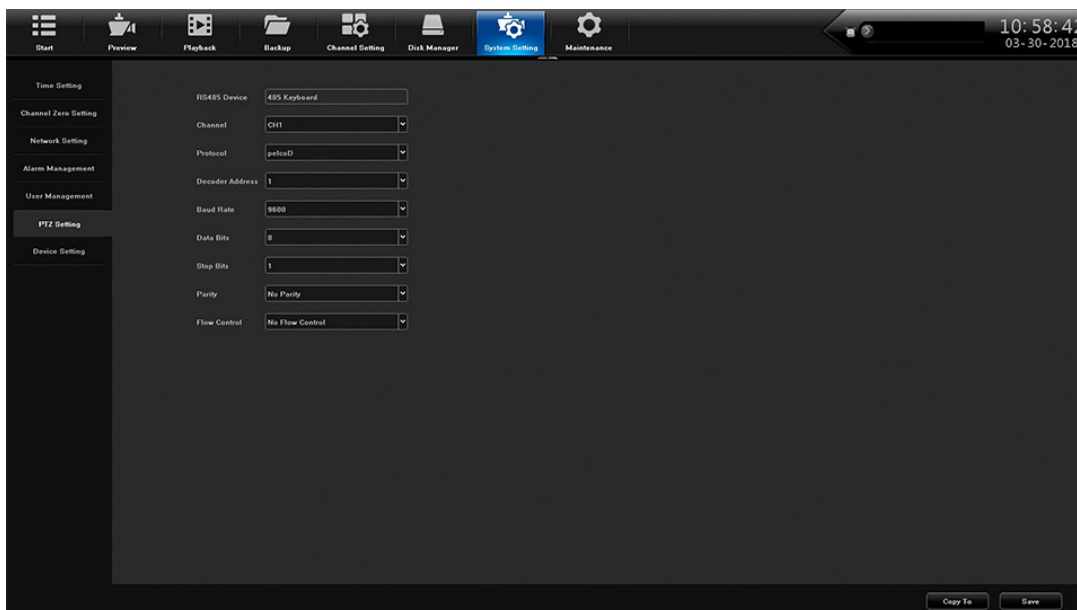


PTZ Setting Side Tab

The PTZ Setting screen establishes PTZ camera configuration. Set this configuration through the following fields:

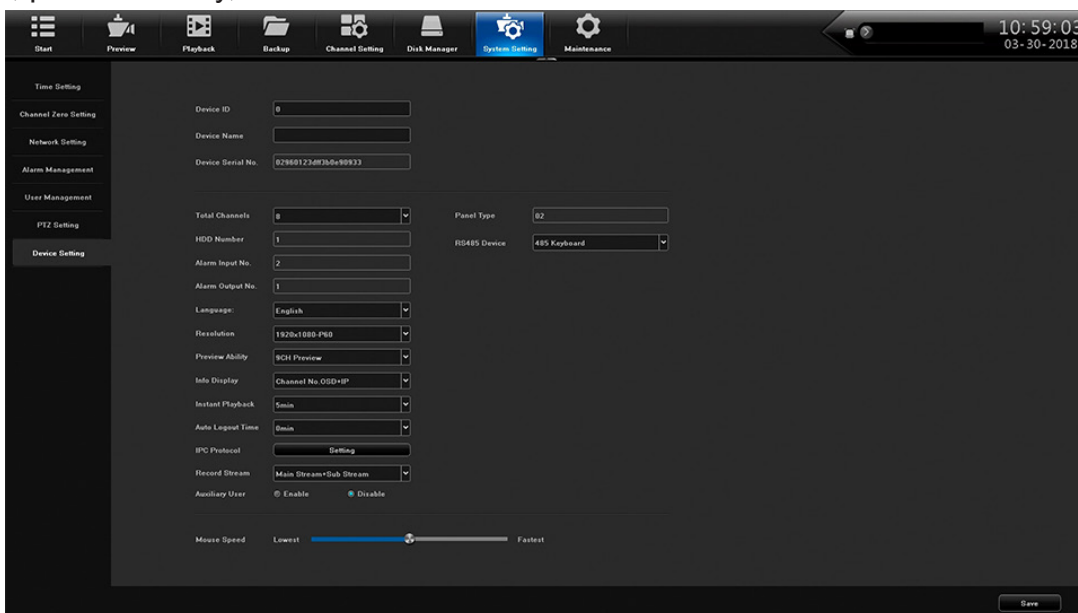
- Channel
- Protocol
- Decoder Address
- Baud Rate

- Data Bits
- Stop Bits
- Parity
- Flow Control



Device Setting Side Tab

Use the Device Setting side tab to configure network basics such as device name, Language, resolution, preview ability, and others.



MAINTENANCE MAIN TAB

System Information Side Tab

The System Information side tab has the following top tabs:

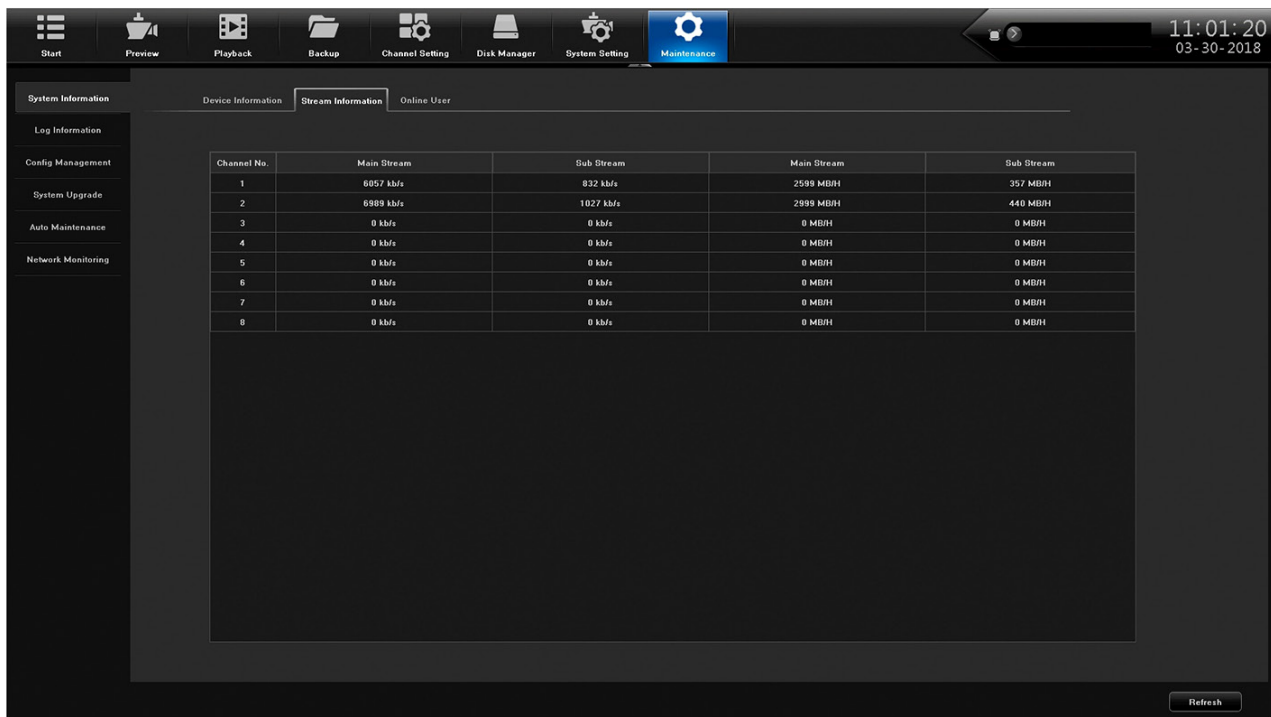
- Device Information
- Stream Information
- Online User

Device Information Top Tab

This screen displays the current firmware version and its description.

Stream Information Top Tab

This tab lists the main and substream information in kb/s and MB/H for each channel.



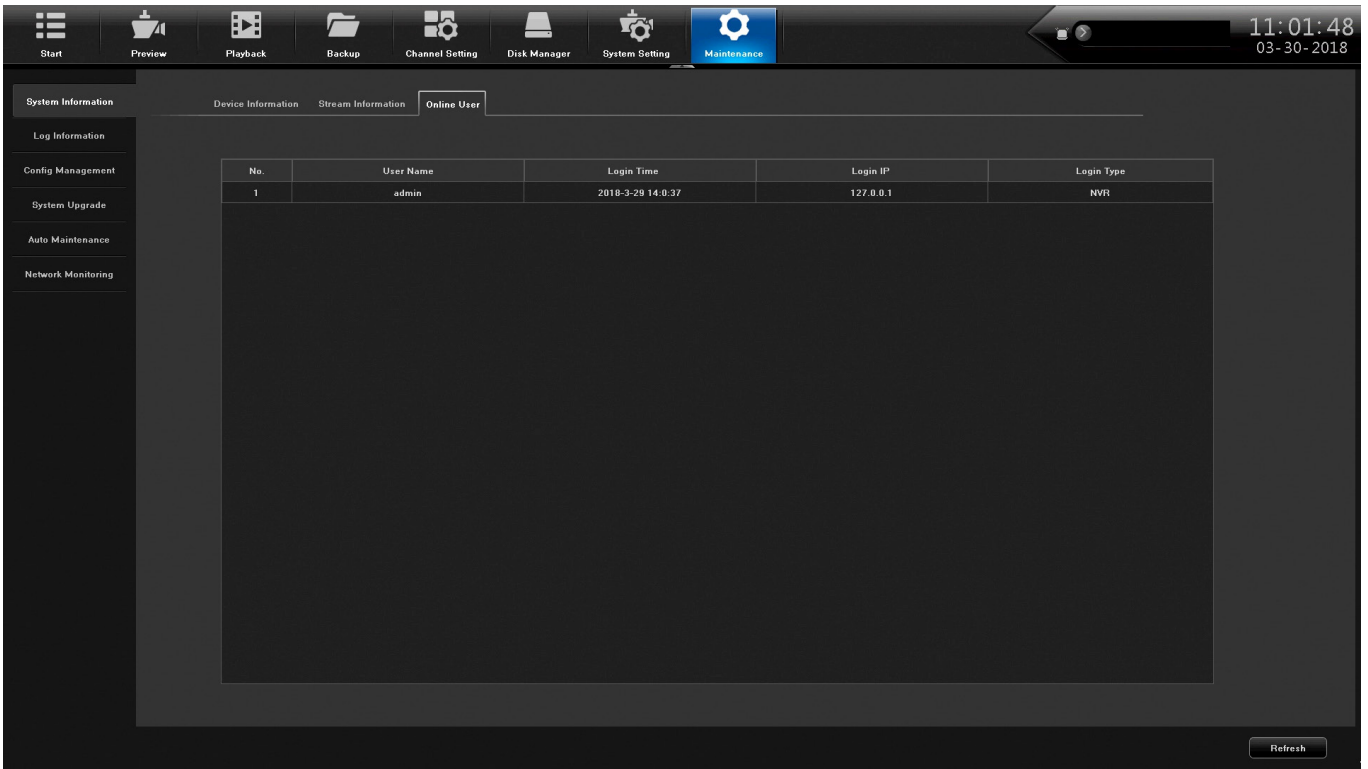
The screenshot shows a software interface with a top navigation bar containing icons for Start, Preview, Playback, Backup, Channel Setting, Disk Manager, System Setting, and Maintenance. The Maintenance icon is highlighted. The main content area has tabs for System Information, Device Information, Stream Information (selected), and Online User. A left sidebar lists various system functions. The central part of the screen displays a table with stream data for 8 channels.

Channel No.	Main Stream	Sub Stream	Main Stream	Sub Stream
1	6657 kb/s	832 kb/s	2599 MB/H	357 MB/H
2	6989 kb/s	1027 kb/s	2939 MB/H	440 MB/H
3	0 kb/s	0 kb/s	0 MB/H	0 MB/H
4	0 kb/s	0 kb/s	0 MB/H	0 MB/H
5	0 kb/s	0 kb/s	0 MB/H	0 MB/H
6	0 kb/s	0 kb/s	0 MB/H	0 MB/H
7	0 kb/s	0 kb/s	0 MB/H	0 MB/H
8	0 kb/s	0 kb/s	0 MB/H	0 MB/H

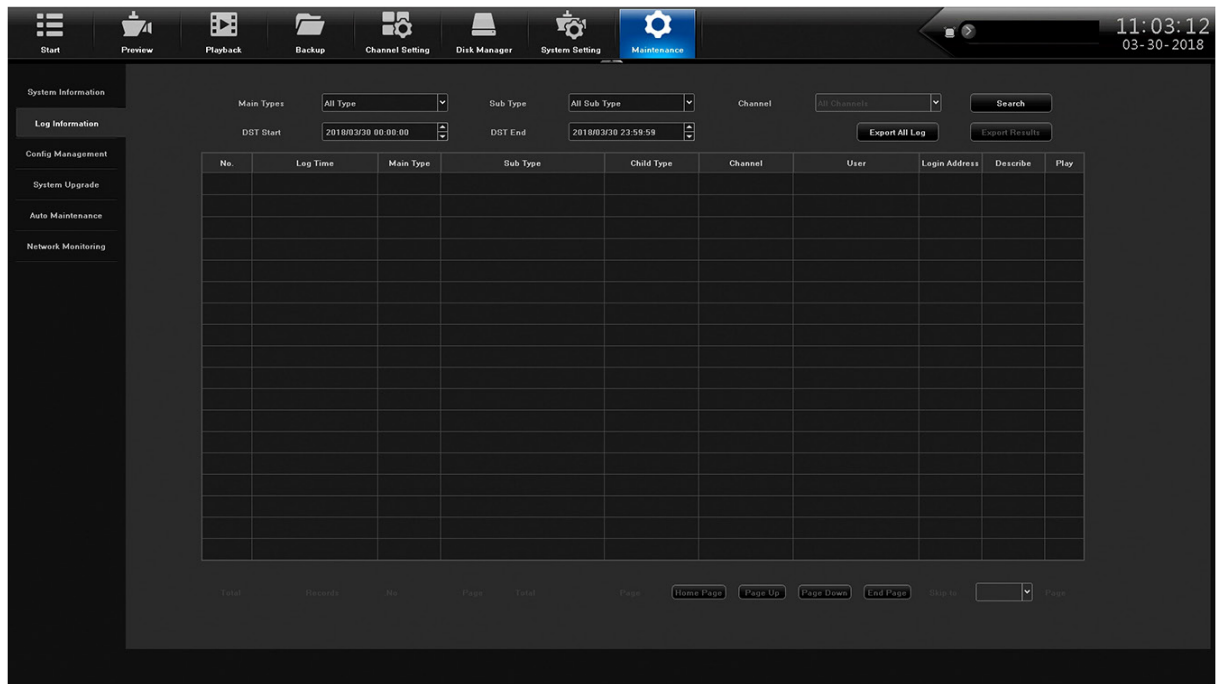
Refresh

Online User Top Tab

This tab lists each user and provides login information.



Log Information Side Tab

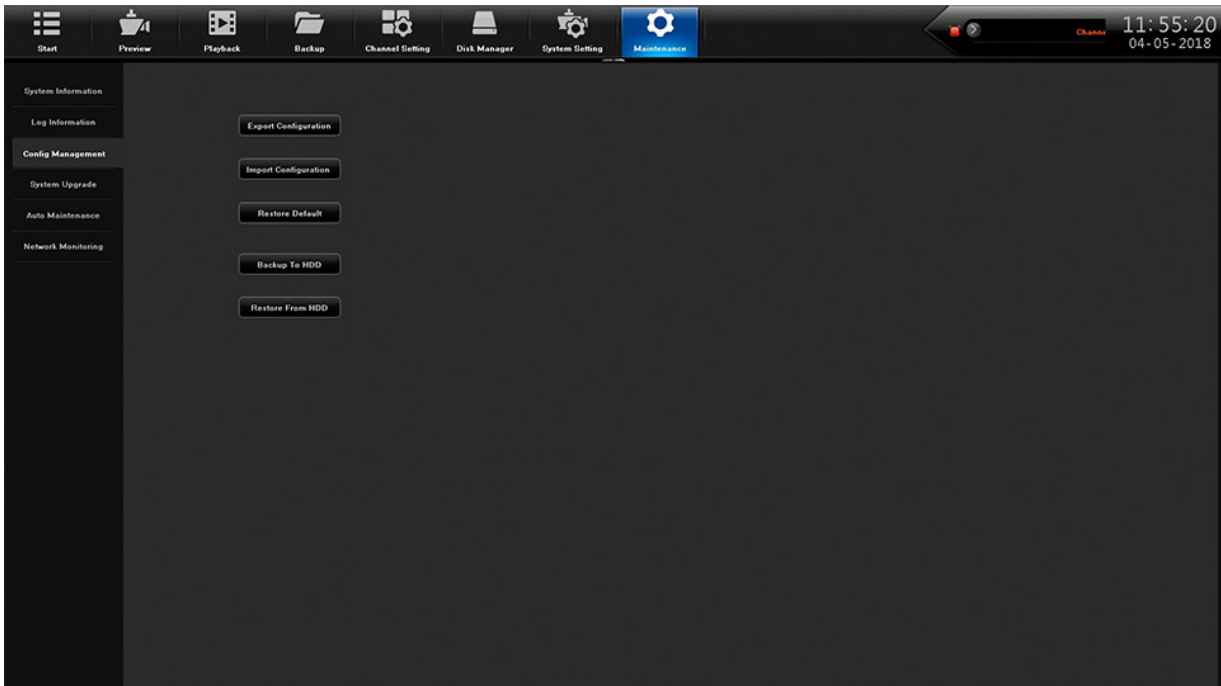


FIELD	DESCRIPTION
Main Types	Select a type from the dropdown list.
DST Start/DST End	Adjust DST start and end times.
Sub types	Select a sub type from the dropdown list.

Config Management Side Tab

This screen has 5 selections:

- Export Configuration
- Import Configuration
- Restore Default
- Backup to HDD
- Restore from HD

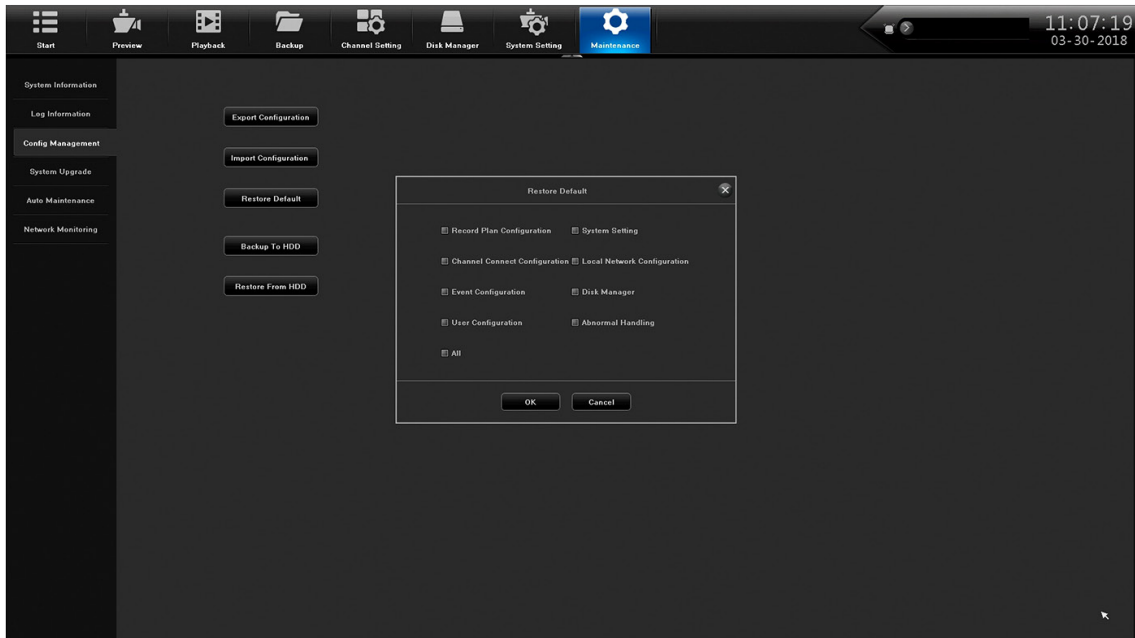


Export Configuraton/Import Configuration

These selections let you import or export configuration information from a USB drive or a mobile HDD.

Restore Default

This selection brings up a screen to select what defaults you want to restore.

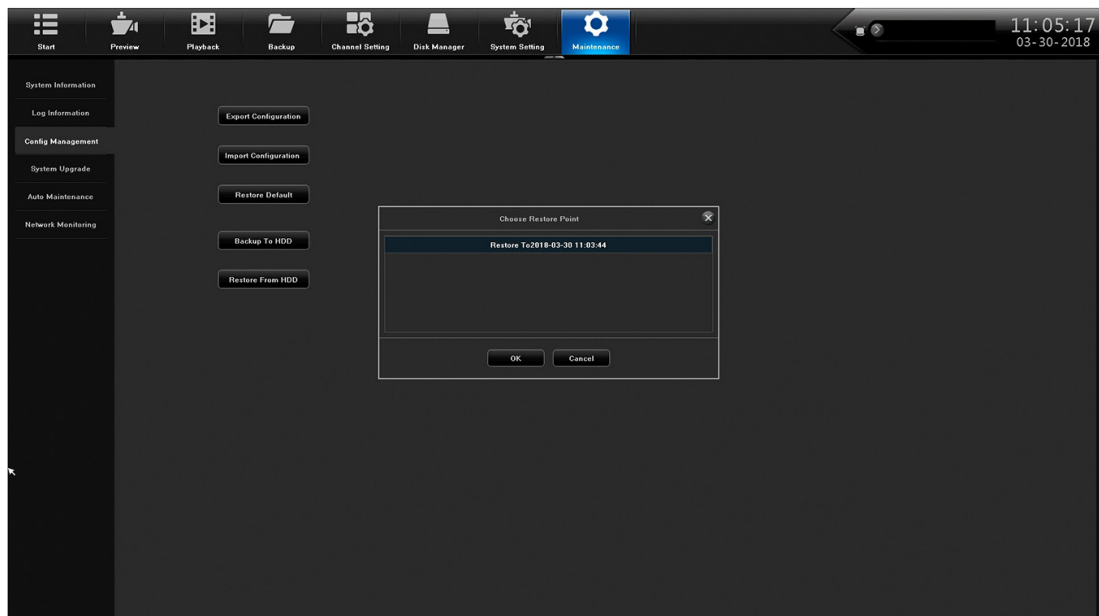


Backup to HDD

Select this option and the NVR backs up to an HDD. A progress bar displays and then a backup successful message displays.

Restore from HDD

Select this option and the NVR restores from a user-selected restoration point. A progress bar displays and then a restore successful message displays

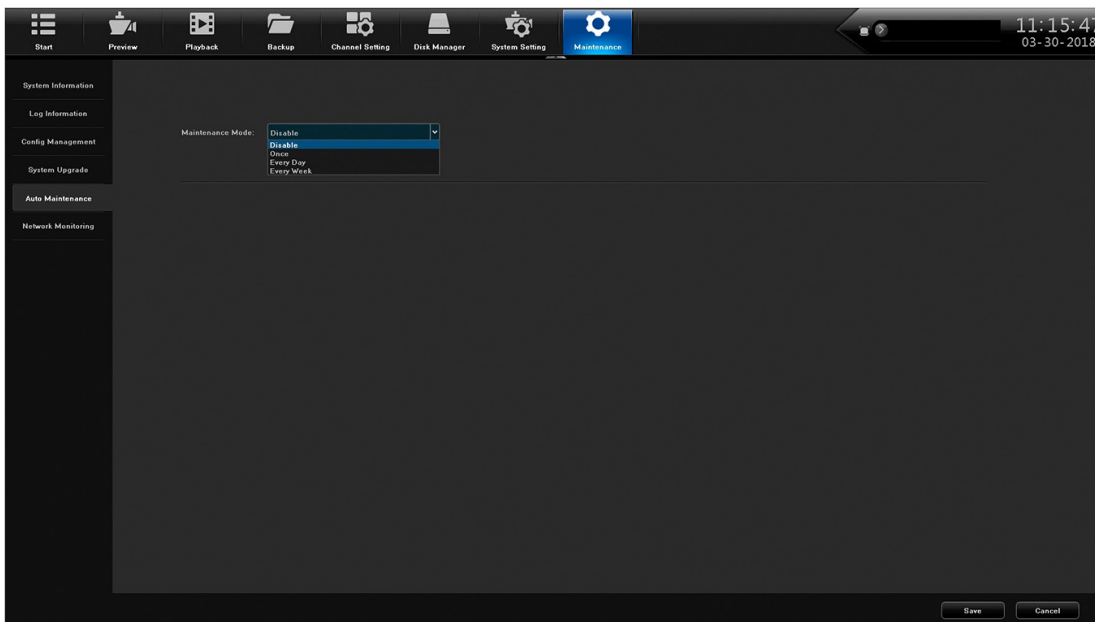


System Upgrade Side Tab

Upgrade the NVR (Local Upgrade top tab) or the IP camera (Upgrade IPC top tab).

Auto Maintenance Side Tab

Maintenance mode reboots the NVR system according to a schedule selected from the dropdown menu..



Network Monitoring Side Tab

Network Flow Top Tab

Selecting this top tab displays a graph of network bandwidth usage in real time.



Network Test

Use this top tab to test for local network connectivity with a destination IP address. This test is similar to a ping function.

Start Preview Playback Backup Channel Setting Disk Manager System Setting Maintenance

11:17:27
03-30-2018

System Information
Log Information
Config Management
System Upgrade
Auto Maintenance
Network Monitoring

Network Flow **Network Test**

Network Delay, Packet Loss Test

NIC Select LAN1
Destination Addr Test

Network Wireshark Backup

Storage Path Browse

Current Network Card LAN1 192.168.1.38 DE-F3-B8-E8-09-33 Wireshark Backup

FIRMWARE UPDATES

From time to time, Uniden may update its products' firmware to improve features, fix bugs, or otherwise improve the product. Uniden recommends checking for firmware updates periodically.

Check for firmware updates if you have service issues; your firmware may be out of date.

1. Go to *Main Menu/Information/System* to locate the current NVR firmware version.
2. Go to <http://unidensupport.com/Find-Your-Product/Downloads> and look for the NVR. Check your NVR's firmware number against the latest firmware download available.
3. If there is a firmware version that is later than the firmware version on your system, download it to your USB drive.
4. Power down your NVR.
5. Insert the USB drive into the non-mouse USB port on the BACK of the receiver.

Do NOT insert the USB drive into the USB port on the front of the receiver.

6. Power up your NVR. The system reboots and imports the new firmware.

TROUBLESHOOTING

After turning on, the system cannot switch on normally.

Possible reasons:

- The power supply is damaged.
- Power cable is damaged.
- Firmware is outdated.
- The hard disk is damaged.
- The internal power board is damaged.

The NVR reboots automatically or frequently stops working after booting up for a few minutes

Possible reasons:

- A Network Test has been set up.
- The input voltage is not stable or too low.
- The hard disk or the hard disk cables are damaged.
- The front-end video signal is not stable.
- Poor heat dissipation, too much dust, bad physical environment for the NVR.
- NVR hardware is damaged.

Cannot detect hard disk after turning on power.

Possible reasons:

- The hard disk power supply cable is not connected.
- The hard disk cables are damaged.
- The hard disk is damaged.
- The hard disk has failed.
- The SATA port of the main board is damaged.

No video output in single channel, multiple channels, or all channels.

Possible reasons:

- Firmware is out of date. Upgrade the firmware.
- The image brightness is all 0. Please restore the default setup.
- There is no video input signal or the signal is too weak.
- The NVR hardware is damaged.
- Camera power supply damaged or unplugged.

Real-time image problems such as serious distortion of the image, color, or brightness, etc.

Possible reasons:

- The NVR is not matched with the impedance of the monitor.
- The video transmission distance is too far or the attenuation of video transmission cable is too big.

Cannot find video files in local playback.

Possible reasons:

- The hard disk is damaged or no video data.
- Upgrade firmware which is different from the original firmware files.
- The video files you want to see are overwritten.

Local Video appears blurred.

Possible reasons:

- The video quality is set too low.
- The program data reads incorrectly; reboot the NVR.
- The hard disk is damaged.
- The NVR hardware is damaged.

No audio signal in the surveillance window.

Possible reasons:

- Camera does not support audio.
- Camera's audio is damaged.
- The NVR hardware is damaged.

There is audio signal in the surveillance window but no audio signal when playback

Possible reasons:

- The audio option is not selected.
- The corresponding channel is not connected with the video. When the image appears as a blue screen, the playback will be intermittent.

The time display is wrong.

Possible reasons:

- The setting is wrong.
- Internal batteries are not properly connected or the voltage is too low.

NVR can not control the PTZ.

Possible reasons:

- The PTZ camera is not connected correctly.
- The baud rate, address, and protocol settings of the front-end PTZ and device PTZ are inconsistent.

Motion detection is not working.

Possible reasons:

- Time is not set correctly.
- The motion detection area is not set correctly.
- The sensitivity is too low.

No image or poor quality video when in Live view or when playing back recorded files.

Possible reasons:

- Too much data is flowing on the network (too many users logged into the system).
- Camera not connected properly (not transmitting data correctly).
- Connection issues between camera and NVR.

Something wrong with the USB backup.

Possible reasons:

- There are not enough NVR resources available. Please stop recording and proceed with backup.
- The backup device is not compatible.
- The backup device is damaged.
- Not enough room on backup device.

Alarm is not working.

Possible reasons:

- The alarm setting is incorrect.
- The alarm input signal is incorrect.

SPECIFICATIONS

GENERAL	PRO800N2-4K	PRO1600N2-4K	PRO3600N2-4K
Power Supply	DC48V/3A (power plug specification optional)	DC48V/3A (power plug specification optional)	AC100~240V, 50Hz~60Hz (Power plug specification optional)
Power Consumption	<10W (Without HDD)	<10W (Without HDD)	<35W (Without HDD)
Operation Temperature	14°F ~ 131°F (-10°C ~ 55°C)	14°F ~ 131°F (-10°C ~ 55°C)	14°F ~ 131°F (-10°C ~ 55°C)
Humidity	90%	90%	90%
VIDEO			
Network Video Input	8 CH	16 CH	36 CH
Network Access Banddepth	80Mbps	80Mbps	288Mbps
Video Compression	H.265 /H.264 /MJPEG	H.265 /H.264 /MJPEG	H.265 /H.264 /MJPEG
Video Output	HDMI Output	HDMI Output	1 CH VGA output (1920×1080@60Hz, 1280×1024@60Hz)
	3840×2160@30HZ, 1920×1080@60HZ, 1280×1024@60HZ	3840×2160@30HZ, 1920×1080@60HZ, 1280×1024@60HZ	1 CH HDMI output (3840×2160@30Hz, 1920×1080@60Hz, 1280×1024 @60Hz)
Image Display	1/4/6/8/9 image display	1/4/6/8/9 image display	1/4/6/8/9/16/25/36 image display
Snapshot Mode	Support timing snapshot, manual snapshot, JPEG format	Support timing snapshot, manual snapshot, JPEG format	Support timing snapshot, manual snapshot, JPEG format
Motion Detection	Support 396(22*18) surveyed area can be set in every screen and multi-level sensitivity adjustable	Support 396(22*18) surveyed area can be set in every screen and multi-level sensitivity adjustable	Support 396(22*18) surveyed area can be set in every screen and multi-level sensitivity adjustable
Privacy Mask	4 zones	4 zones	4 zones
VIDEO RECORDING AND PLAYBACK			
Frame Rate	1-30fps	1-30fps	1-30fps
Record Mode	Manual/external alarm/ MD/ timing/intelligent analysis alarm	Manual/external alarm/ MD/ timing/intelligent analysis alarm	Manual/external alarm/ MD/ timing/intelligent analysis alarm
Playback Mode	Instant playback, Local video, local image, External file playback	Instant playback, Local video, local image, External file playback	Instant playback, Local video, local image, External file playback
AUDIO			
Audio Compression	G.711u	G.711u	G.711u
Audio Input	IPC complex audio input	IPC complex audio input	1 CH RCA port (IPC complex audio input)
Audio Output	1CH, RCA interface	1CH, RCA interface	1CH, RCA port
Bidirectional Talk Input	NA	NA	Bidirection talk, RCA port
STORAGE AND BACKUP			
Storage Interface	2 SATA	2 SATA	8 SATA, 1 E-SATA
HDD Capacity	Single max. 8TB	Single max. 8TB	Single max. 8TB
Backup Location	Local, network	Local, network	Local, network, NAS, IPSAN
Array Type	NA	NA	Raid0, Raid1, Raid5, Raid6, Raid10
Backup Method	USB mobile hard disk, U disk, network backup	USB mobile hard disk, U disk, network backup	USB mobile hard disk, U disk, network backup

GENERAL	PRO800N2-4K	PRO1600N2-4K	PRO3600N2-4K
ANR	Support FSAN IPC (with TF card) ANR	Support FSAN IPC (with TF card) ANR	Support FSAN IPC (with TF card) ANR
EXT. INTERFACE			
Network Interface	1 RJ45 100M Ethernet port	1 RJ45 100M Ethernet port	1 RJ45 100M1000M adaptive Ethernet port
PoE Interface	8CH (IEEE 802.3af)	8CH (IEEE 802.3af)	16CH
Alarm Input	0	4 CH	4 CH
Alarms Output	1 CH	1 CH	1 CH
RS485	1CH	1CH	1CH
USB Interface	Rear panel: 2 USB 2.0	Rear panel: 2 USB 2.0	Front panel: 1 USB 2.0 Rear panel: 1 USB 2.0, 1 USB 3.0

GENERAL	PRO3600N8-4K	PRO6400N0-4K	PRO12800N0-4K
Power Supply	DC48V/3A (power plug specification optional)	DC48V/3A (power plug specification optional)	AC100~240V, 50Hz~60Hz (Power plug specification optional)
Power Consumption	<10W (Without HDD)	<10W (Without HDD)	<35W (Without HDD)
Operation Temperature	14°F ~ 131°F (-10°C ~ 55°C)	14°F ~ 131°F (-10°C ~ 55°C)	14°F ~ 131°F (-10°C ~ 55°C)
Humidity	90%	90%	90%

VIDEO			
Network Video Input	36 CH	64 CH	128 CH
Network Access Banddepth	288Mbps	512Mbps	640Mbps
Video Compression	H.265 /H.264 /MJPEG	H.265 /H.264 /MJPEG	H.265 /H.264 /MJPEG
Video Output	1 CH VGA output (1920×1080@60Hz, 1280×1024@60Hz)	1 CH VGA output (1920×1080@60Hz, 1280×1024@60Hz)	2CH VGA Heterologous output (1920×1080@60Hz, 1280×1024@60Hz)
	1 CH HDMI output (3840×2160@30Hz, 1920×1080@60Hz, 1280×1024 @60Hz)	1 CH HDMI output (3840×2160@30Hz, 1920×1080@60Hz, 1280×1024 @60Hz)	2CH HDMI Heterologous output (3840×2160@30Hz, 1920×1080@60Hz, 1280×1024@60Hz)
Image Display	1/4/6/8/9 image display	1/4/6/8/9/16/25/36/64 image display	1/4/6/8/9/16/25/36/64 image display
Snapshot Mode	Support timing snapshot, manual snapshot, JPEG format	Support timing snapshot, manual snapshot, JPEG format	Support timing snapshot, manual snapshot, JPEG format
Motion Detection	Support 396 (22*18) surveyed area can be set in every screen and multi-level sensitivity adjustable	Support 396 (22*18) surveyed area can be set in every screen and multi-level sensitivity adjustable	Support 396 (22*18) surveyed area can be set in every screen and multi-level sensitivity adjustable
Privacy Mask	4 zones	4 zones	4 zones

VIDEO RECORDING AND PLAYBACK			
Frame Rate	1-30fps	1-30fps	1-30fps
Record Mode	Manual/external alarm/ MD/ timing/intelligent analysis alarm	Manual/external alarm/ MD/ timing/intelligent analysis alarm	Manual/external alarm/ MD/ timing/intelligent analysis alarm
Playback Mode	Instant playback, Local video, local image, External file playback	Instant playback, Local video, local image, External file playback	Instant playback, Local video, local image, External file playback

AUDIO			
Audio Compression	G.711u	G.711u	G.711u

GENERAL	PRO3600N8-4K	PRO6400N0-4K	PRO12800N0-4K
Audio Input	IPC complex audio input	IPC complex audio input	1 CH RCA port (IPC complex audio input)
Audio Output	1CH, RCA port	1CH, RCA port	2CH, RCA interface
Bidirectional Talk Input	Bidirection talk, RCA port	Bidirection talk, RCA port	Bidirection talk, RCA port
STORAGE AND BACKUP			
Storage Interface	8 SATA, 1 E-SATA	8 SATA, 1 E-SATA	16 SATA, 2 E-SATA
HDD Capacity	Single max. 8TB	Single max. 8TB	Single max. 8TB
Backup Location	Local, network, NAS, IPSAN	Local, network, NAS, IPSAN	Local, network, NAS, IPSAN
Array Type	Raid0, Raid1, Raid5, Raid6, Raid10	Raid0, Raid1, Raid5, Raid6, Raid10	Raid0, Raid1, Raid5, Raid6, Raid10
Backup Method	USB mobile hard disk, U disk, network backup	USB mobile hard disk, U disk, network backup	USB mobile hard disk, U disk, network backup
ANR	Support FSAN IPC (with SD card) ANR	Support FSAN IPC (with SD card) ANR	Support FSAN IPC (with SD card) ANR
EXT. INTERFACE			
Network Interface	1 RJ45 100M/1000M Ethernet port	2 RJ45 100M/1000M adaptive Ethernet port	1 RJ45 100M/1000M adaptive Ethernet port
PoE Interface	16CH	NA	NA
Alarm Input	4 Ch	16 CH	16 Ch
Alarms Output	1 CH	4 CH	8 CH
RS485	1CH	1CH	RS422: 1CH
USB Interface	Front panel: 1 USB 2.0, Rear panel: 1 USB 2.0, 1 USB 3.0	Front panel: 1 USB 2.0, Rear panel: 1 USB 2.0, 1 USB 3.0	Front panel: 2 USB2.0 Rear panel: 1 USB3.0

GENERAL	PRO800N2-5MP	PRO1600N3-5MP
Power Supply	DC48V/3A (power plug specification optional)	DC48V/3A (power plug specification optional)
Power Consumption	<10W (Without HDD)	<10W (Without HDD)
Operation Temperature	14°F ~ 131°F (-10°C ~ 55°C)	14°F ~ 131°F (-10°C ~ 55°C)
Humidity	90%	90%
VIDEO		
Network Video Input	8 CH	16 CH
Network Access Banddepth	60 Mbps	80 Mbps
Video Compression	H.264 /MJPEG	H.265 /H.264 /MJPEG
Video Output	VGA/HDMI sync output 1920×1080@60Hz 1280×1024@60Hz	VGA/HDMI sync output 1920×1080@60Hz 1280×1024@60Hz
Image Display	1/4/6/8/9 image display	1/4/6/8/9/16 image display
Snapshot Mode	Support timing snapshot, manual snapshot, JPEG format	Support timing snapshot, manual snapshot, JPEG format
Motion Detection	Support 396 (22*18) surveyed area can be set in every screen and multi-level sensitivity adjustable	Support 396 (22*18) surveyed area can be set in every screen and multi-level sensitivity adjustable
Privacy Mask	4 zones	4 zones
VIDEO RECORDING AND PLAYBACK		
Frame Rate	1-30fps	1-30fps
Record Mode	Manual/external alarm/ MD/timing/intelligent analysis alarm	Manual/external alarm/ MD/timing/intelligent analysis alarm
Playback Mode	Instant playback, local video, local image, external file playback	Instant playback, local video, local image, external file playback

GENERAL	PRO800N2-5MP	PRO1600N3-5MP
AUDIO		
Audio Compression	G.711u	G.711u
Audio Input	IPC complex audio input	IPC complex audio input
Audio Output	NA	NA
Bidirectional Talk Input	NA	NA
STORAGE AND BACKUP		
Storage Interface	1 SATA	2 SATA
HDD Capacity	Single max. 8TB	Single max. 8TB
Backup Location	Local, network, IPSAN	Local, network, IPSAN
Array Type	NA	Raid0, Raid1, Raid5, Raid6, Raid10
Backup Method	USB mobile hard disk, U disk, network backup	USB mobile hard disk, U disk, network backup
ANR	Support FSAN IPC (with SD card) ANR	Support FSAN IPC (with SD card) ANR
EXT. INTERFACE		
Network Interface	1 RJ45 100M adaptive Ethernet port	1 RJ45 100M /1000M adaptive Ethernet port
PoE Interface	8CH (IEEE 802.3af)	8CH (IEEE 802.3af)
Alarm Input	2CH	4 CH
Alarms Output	1 CH	1 CH
RS485	1CH	1CH
USB Interface	Front panel: 1 USB 2.0 Rear panel: 1 USB 2.0	Front panel: 1 USB 2.0 Rear panel: 1 USB 2.0

Recycling and Disposal Information

- Do not dispose of electronic devices or any of their components (especially batteries and LCD displays) in your municipal trash collection.
- Consult your local waste management authority or a recycling organization like Earth911.com to find an electronics recycling facility in your area.

FCC Part 15/IC COMPLIANCE

FCC Compliance

This device complies with Part 15 of the FCC rules. Operation is subject to the following two conditions: (1) This device may not cause harmful interference, and (2) this device must accept any interference received, including interference that may cause undesired operation.

Changes or modifications not expressly approved by the party responsible for compliance could void your authority to operate the equipment.

Avis de conformité à la FCC : Ce dispositif a été testé et s'avère conforme à l'article 15 des règlements de la Commission fédérale des communications (FCC). Ce dispositif est soumis aux conditions suivantes: 1) Ce dispositif ne doit pas causer d'interférences nuisibles et; 2) Il doit pouvoir supporter les parasites qu'il reçoit, incluant les parasites pouvant nuire à son fonctionnement.

Tout changement ou modification non approuvé expressément par la partie responsable pourrait annuler le droit à l'utilisateur de faire fonctionner cet équipement.

IC Compliance

This device complies with Industry Canada license-exempt RSS standard(s). Operation is subject to the following two conditions: (1) this device may not cause interference, and (2) this device must accept any interference, including interference that may cause undesired operation of the device.

Changes or modifications not expressly approved by the party responsible for compliance could void your authority to operate the equipment.

Cet appareil est conforme aux normes RSS exemptes de licences d'Industrie Canada. Son fonctionnement est soumis aux deux conditions suivantes : (1) cet appareil ne doit pas causer d'interférences nuisibles et (2), il doit pouvoir accepter les interférences, incluant celles pouvant nuire à son fonctionnement normal.

Tout changement ou modification non approuvé expressément par la partie responsable pourrait annuler le droit à l'utilisateur de faire fonctionner cet équipement.

THREE-YEAR LIMITED WARRANTY

Important: SAVE YOUR RECEIPT! Evidence of original purchase is required for warranty service.

WARRANTOR: Uniden America Corporation ("Uniden") ELEMENTS OF WARRANTY: Uniden warrants, for three years, to the original retail owner, this Uniden Product to be free from defects in materials & craftsmanship with only the limitations or exclusions set out below.

WARRANTY DURATION: This warranty to the original user shall terminate & be of no further effect 36 months after the date of original retail sale. The warranty is invalid if the Product is (A) damaged or not maintained as reasonable or necessary, (B) modified, altered, or used as part of any conversion kits, subassemblies, or any configurations not sold by Uniden, (C) improperly installed, (D) serviced or repaired by someone other than an authorized Uniden service center for a defect or malfunction covered by this warranty, (E) used in any conjunction with equipment or parts or as part of any system not manufactured by Uniden, or (F) installed or programmed by anyone other than as detailed by the owner's manual for this product.

STATEMENT OF REMEDY: In the event that the product does not conform to this warranty at any time while this warranty is in effect, warrantor will either, at its option, repair or replace the defective unit & return it to you without charge for parts, service, or any other cost (except shipping & handling) incurred by warrantor or its representatives in connection with the performance of this warranty. Warrantor, at its option, may replace the unit with a new or refurbished unit.

THE LIMITED WARRANTY SET FORTH ABOVE IS THE SOLE & ENTIRE WARRANTY PERTAINING TO THE PRODUCT & IS IN LIEU OF & EXCLUDES ALL OTHER WARRANTIES OF ANY NATURE WHATSOEVER, WHETHER EXPRESS, IMPLIED OR ARISING BY OPERATION OF LAW, INCLUDING, BUT NOT LIMITED TO ANY IMPLIED WARRANTIES OF MERCHANTABILITY OR FITNESS FOR A PARTICULAR PURPOSE. THIS WARRANTY DOES NOT COVER OR PROVIDE FOR THE REIMBURSEMENT OR PAYMENT OF INCIDENTAL OR CONSEQUENTIAL DAMAGES. Some states do not allow this exclusion or limitation of incidental or consequential damages so the above limitation or exclusion may not apply to you.

LEGAL REMEDIES: This warranty gives you specific legal rights, & you may also have other rights which vary from state to state. This warranty is void outside the United States of America & Canada.

PROCEDURE FOR OBTAINING PERFORMANCE OF WARRANTY: If, after following the instructions in the owner's manual you are certain that the Product is defective, pack the Product carefully (preferably in its original packaging). The Product should include all parts & accessories originally packaged with the Product. Include evidence of original purchase & a note describing the defect that has caused you to return it. The Product should be shipped freight prepaid, by traceable means, to warrantor at:

Uniden America Service
C/O Saddle Creek
743 Henrietta Creek Rd., Suite 100
Roanoke, TX 76026

